

— ABLYBIO, Help Your Research



COL2A1 Rabbit pAb

货号: **AYP11106**

产品信息

反应	Human,Mouse
宿主	Rabbit
克隆性	Polyclonal
预测反应	IHC: Mouse intervertebral disc , Rattus norvegicus , Mus musculus WB: Rattus norvegicus , Mus musculus , Gallus gallus , Homo sapiens IF: Homo sapiens , Rattus norvegicus , Mus musculus WB IHC: Mus musculus PCR: Mus musculus
应用	WB IF/ICC
推荐浓度	WB: 1:500 - 1:1000 IF/ICC: 1:50 - 1:200
理论分子量	29kDa/134kDa/141kDa
实测分子量	141KDa
形式	Liquid
保存条件	Store at -20°C. Avoid freeze / thaw cycles. Buffer: PBS with 0.05% proclin300,50% glycerol,pH7.3.
偶联物	Unconjugated
阳性对照	Mouse skeletal muscle
细胞定位	Secreted,extracellular matrix,extracellular space
纯化	Affinity purification

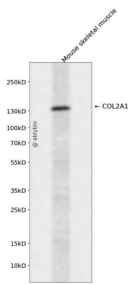
抗原信息

抗原信息	A synthetic peptide corresponding to a sequence within amino acids 1300-1400 of human COL2A1 (NP_01835.3).
------	--

靶点信息

研究背景	This gene encodes the alpha-1 chain of type II collagen, a fibrillar collagen found in cartilage and the vitreous humor of the eye. Mutations in this gene are associated with achondrogenesis, chondrodysplasia, early onset familial osteoarthritis, SED congenita, Langer-Saldino achondrogenesis, Kniest dysplasia, Stickler syndrome type I, and spondyloepimetaphyseal dysplasia Strudwick type. In addition, defects in processing chondrocalcin, a calcium binding protein that is the C-propeptide of this collagen molecule, are also associated with chondrodysplasia. There are two transcripts identified for this gene.
基因ID	1280
基因名	COL2A1
Swiss	P02458 (https://www.uniprot.org/uniprotkb/P02458/entry)
别名	COL2A1,ANFH,AOM,COL11A3,SEDC,STL1,COL2A1 Rabbit pAb,Alpha-1 type II collagen

产品验证



Western blot analysis of COL2A1 expressed in Mouse skeletal muscle using COL2A1 Rabbit pAb at 1:1000. Secondary antibody: HRP Goat Anti-Rabbit IgG (H+L) at 1:5000. Lysates/proteins: 30ug per lane. Blocking buffer: 5% non-fat dry milk in TBST. Detection: ECL Enhanced Kit. Exposure time: 120s.

实验步骤

访问官网浏览详情: www.ablybio.cn (<https://www.ablybio.cn/www.ablybio.cn>)