

CDK1 Rabbit pAb

货号: **AYP11102**

产品信息

反应	Human,Mouse,Rat
宿主	Rabbit
克隆性	Polyclonal
预测反应	WB: Human gastric cancer cells , Human tumor cell , HeLa , HCT116 , Mus musculus , Homo sapiens , Rattus norvegicus , Sus scrofa IP: Rattus norvegicus IF: Homo sapiens
应用	WB IHC IF/ICC IP
推荐浓度	WB: 1:500 - 1:2000 IHC: 1:50 - 1:100 IF/ICC: 1:50 - 1:200 IP: 1:50 - 1:200
理论分子量	27kDa/34kDa
实测分子量	34KDa
形式	Liquid
保存条件	Store at -20°C. Avoid freeze / thaw cycles. Buffer: PBS with 0.02% sodium azide,50% glycerol,pH7.3.
偶联物	Unconjugated
阳性对照	Jurkat,C6,Mouse spleen
细胞定位	Cytoplasm,Mitochondrion,Nucleus,centrosome,cytoskeleton,microtubule organizing center,spindle
纯化	Affinity purification

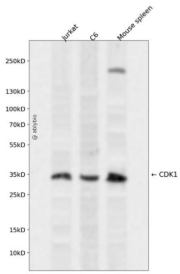
抗原信息

抗原信息	Recombinant fusion protein containing a sequence corresponding to amino acids 1-297 of human CDK1 (NP_001777.1).
序列	MEDYTKIEKIGEGTYGVVYKGRHKTTGQVVAMKKIRLESEEEGVPSTAIRESILLKELRHPNIVSLQDVLQMDSRLYLIFEFLSMDLKKYLDLSDIPPGQYMDSSLVKSILYQILQGIVFCHSRRVLHRDLKPNLLIDDKGTIKLADDFGLARAFGIPIRVYTHEVVTLYWRSPEVLLGSARYSTPVDIWSIGTIFAELATKKPLFHGDSEIDQLFRIFRALGTPNNEVWPEVESLQDYKNTFPKWKPGSLASHVKNLDENGLDLLSKMLIYDPAKRISGKMLNHPYFNDLDNQIKKM

靶点信息

研究背景	The protein encoded by this gene is a member of the Ser/Thr protein kinase family. This protein is a catalytic subunit of the highly conserved protein kinase complex known as M-phase promoting factor (MPF), which is essential for G1/S and G2/M phase transitions of eukaryotic cell cycle. Mitotic cyclins stably associate with this protein and function as regulatory subunits. The kinase activity of this protein is controlled by cyclin accumulation and destruction through the cell cycle. The phosphorylation and dephosphorylation of this protein also play important regulatory roles in cell cycle control. Alternatively spliced transcript variants encoding different isoforms have been found for this gene.
基因ID	983
基因名	CDK1
Swiss	P06493
别名	CDK1;CDC2;CDC28A;P34CDC2

产品验证



Western blot analysis of CDK1 expressed in Jurkat,C6,Mouse spleen using CDK1 Rabbit pAb at 1:1000. Secondary antibody: HRP Goat Anti-Rabbit IgG (H+L) at 1:5000. Lysates/proteins: 30ug per lane. Blocking buffer: 5% non-fat dry milk in TBST. Detection: ECL Enhanced Kit. Exposure time: 120s.

实验步骤

访问官网浏览详情: www.ablybio.cn