

# LC3A/LC3B Rabbit pAb

货号: AYP11095

## 产品信息

反应	Human,Mouse,Rat
宿主	Rabbit
克隆性	Polyclonal
预测反应	<b>WB:</b> Pollen , Mus musculus , Rattus norvegicus , Homo sapiens , Gallus gallus , Chlorocebus sabaesus , Ct enopharyngodon idellus , Sus scrofa <b>IF:</b> Pollen
应用	WB IHC IF/ICC
推荐浓度	<b>WB:</b> 1:500 - 1:2000 <b>IHC:</b> 1:50 - 1:200 <b>IF/ICC:</b> 1:50 - 1:200
理论分子量	14kDa
实测分子量	14kDa/16kDa
形式	Liquid
保存条件	Store at -20°C. Avoid freeze / thaw cycles. Buffer: PBS with 0.01% thiomersal,50% glycerol,pH7.3.
偶联物	Unconjugated
阳性对照	293T,SH-SY5Y,A375,Mouse brain,Rat brain,NIH/3T3,C6
细胞定位	Cytoplasm,Cytoplasmic vesicle,Endomembrane system,Lipid-anchor,autophagosome,autophagosome membrane,cytoskeleton
纯化	Affinity purification

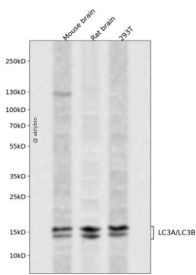
## 抗原信息

抗原信息	A synthetic peptide corresponding to a sequence within amino acids 1-60 of human LC3A (NP_115903.1).
序列	MPSDRPFKQRRSFADRCKEVQQIRDQHPSKIPVIIERYKGEKQLPVLDKTKFLVPDHVNM

## 靶点信息

研究背景	MAP1A and MAP1B are microtubule-associated proteins which mediate the physical interactions between microtubules and components of the cytoskeleton. MAP1A and MAP1B each consist of a heavy chain subunit and multiple light chain subunits. The protein encoded by this gene is one of the light chain subunits and can associate with either MAP1A or MAP1B. Two transcript variants encoding different isoforms have been found for this gene. The expression of variant 1 is suppressed in many tumor cell lines, suggesting that it may be involved in carcinogenesis.
基因ID	84557,81631
基因名	MAP1LC3A,MAP1LC3B
Swiss	Q9GZQ8,Q9H492
别名	MAP1LC3B;ATG8F;LC3B;MAP1A/1BLC3;MAP1LC3B-a;MAP1LC3A;ATG8E;LC3;LC3A;MAP1ALC3;MAP1BLC3;LC3A/LC3B

## 产品验证



Western blot analysis of LC3A/LC3B expressed in Mouse brain,Rat brain,293T using LC3A/LC3B Rabbit pAb at 1:1000. Secondary antibody: HRP Goat Anti-Rabbit IgG (H+L) at 1:5000. Lysates/proteins: 30ug per lane. Blocking buffer: 5% non-fat dry milk in TBST. Detection: ECL Enhanced Kit. Exposure time: 1 20s.

## 实验步骤

访问官网浏览详情: [www.ablybio.cn](http://www.ablybio.cn)