

# ATF6 Rabbit pAb

货号: **AYP11078**

## 产品信息

反应	Human,Mouse,Rat
宿主	Rabbit
克隆性	Polyclonal
预测反应	<b>WB:</b> Rattus norvegicus , Homo sapiens , Mus musculus , Sus scrofa , Bos taurus , Trachemys scripta elegans , Chlorocebus aethiops <b>WB、IF:</b> Homo sapiens
应用	<a href="#">WB</a> <a href="#">IF/ICC</a> <a href="#">IHC</a>
推荐浓度	<b>WB:</b> 1:100 - 1:500 <b>IF/ICC:</b> 1:50 - 1:200 <b>IHC:</b> 1:50 - 1:200
理论分子量	74kDa
实测分子量	90-100KDa
形式	Liquid
保存条件	Store at -20°C. Avoid freeze / thaw cycles. Buffer: PBS with 0.05% proclin300,50% glycerol,pH7.3.
偶联物	Unconjugated
阳性对照	293T,HeLa,C2C12,C6
细胞定位	Endoplasmic reticulum membrane,Nucleus,Single-pass type II membrane protein
纯化	Affinity purification

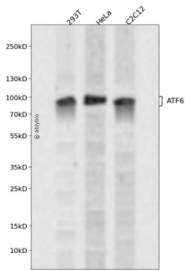
## 抗原信息

抗原信息	Recombinant fusion protein containing a sequence corresponding to amino acids 1-190 of human ATF6 (NP_031374.2).
序列	MGEPAGVAGTMESPFSPGLFHRLEDWDWDSALFAELGYFTDTDELQLEAANETYENNFNDFDLDFDLMPWESDIWDINN QICTVKDIKAEPQLSPASSYSVSSPRSVDSYSSTQHVP EELDLSSSQMSPLSLYGENSNLSSAEPLKEDKPV TGRNK TENGLTPKKKIQVNSKPSIQPKPLLLPAAP

## 靶点信息

研究背景	This gene encodes a transcription factor that activates target genes for the unfolded protein response (UPR) during endoplasmic reticulum (ER) stress. Although it is a transcription factor, this protein is unusual in that it is synthesized as a transmembrane protein that is embedded in the ER. It functions as an ER stress sensor/transducer, and following ER stress-induced proteolysis, it functions as a nuclear transcription factor via a cis-acting ER stress response element (ERSE) that is present in the promoters of genes encoding ER chaperones. This protein has been identified as a survival factor for quiescent but not proliferative squamous carcinoma cells. There have been conflicting reports about the association of polymorphisms in this gene with diabetes in different populations, but another polymorphism has been associated with increased plasma cholesterol levels. This gene is also thought to be a potential therapeutic target for cystic fibrosis.
基因ID	22926
基因名	ATF6
Swiss	P18850
别名	ATF6;ACHM7;ATF6A

## 产品验证



Western blot analysis of ATF6 expressed in 293T, HeLa, C2C12 using ATF6 Rabbit pAb at 1:1000. Secondary antibody: HRP Goat Anti-Rabbit IgG (H+L) at 1:5000. Lysates/proteins: 30ug per lane. Blocking buffer: 5% non-fat dry milk in TBST. Detection: ECL Enhanced Kit. Exposure time: 120s.

## 实验步骤

访问官网浏览详情: [www.ablybio.cn](http://www.ablybio.cn)