

Phospho-Smad2-S465/467 + Smad3-S423/425 Rabbit pAb

货号: AYP11042

产品信息

反应	Human,Mouse,Rat
宿主	Rabbit
克隆性	Polyclonal
预测反应	IHC: Rattus norvegicus IF: Rattus norvegicus , Gallus gallus , Homo sapiens CHIP: Rattus norvegicus WB: Mus musculus , Rattus norvegicus , Homo sapiens , Gallus gallus
应用	WB IHC IF/ICC
推荐浓度	WB: 1:500 - 1:1000 IHC: 1:50 - 1:200 IF/ICC: 1:50 - 1:200
理论分子量	48kDa/52kDa/25kDa/35kDa/43kDa
实测分子量	60KDa
形式	Liquid
保存条件	Store at -20°C. Avoid freeze / thaw cycles. Buffer: PBS with 0.01% thiomersal,50% glycerol,pH7.3.
偶联物	Unconjugated
阳性对照	C2C12
细胞定位	Cytoplasm,Nucleus
纯化	Affinity purification

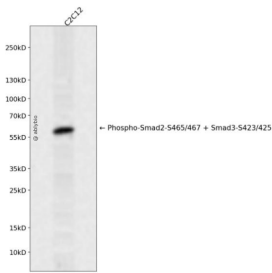
抗原信息

抗原信息	A synthetic phosphorylated peptide around S465 & S467 of human Phospho-Smad2-S465/467 + Smad3-S423/425SMAD2 (NP_005892.1).
序列	SSMS

靶点信息

研究背景	The protein encoded by this gene belongs to the SMAD, a family of proteins similar to the gene products of the Drosophila gene 'mothers against decapentaplegic' (Mad) and the C. elegans gene Sma. SMAD proteins are signal transducers and transcriptional modulators that mediate multiple signaling pathways. This protein mediates the signal of the transforming growth factor (TGF)-beta, and thus regulates multiple cellular processes, such as cell proliferation, apoptosis, and differentiation. This protein is recruited to the TGF-beta receptors through its interaction with the SMAD anchor for receptor activation (SARA) protein. In response to TGF-beta signal, this protein is phosphorylated by the TGF-beta receptors. The phosphorylation induces the dissociation of this protein with SARA and the association with the family member SMAD4. The association with SMAD4 is important for the translocation of this protein into the nucleus, where it binds to target promoters and forms a transcription repressor complex with other cofactors. This protein can also be phosphorylated by activin type 1 receptor kinase, and mediates the signal from the activin. Alternative spliced transcript variants have been observed for this gene. [provided by RefSeq, May 2012]
基因ID	4087,4088
基因名	SMAD2,SMAD3
Swiss	Q15796,P84022
别名	HSPC193;HsT17436;JV15-2;LDS1C;LDS3;MADH3

产品验证



Western blot analysis of Phospho-Smad2-S465/467 + Smad3-S423/425 expressed in C2C12 using Phospho-Smad2-S465/467 + Smad3-S423/425 Rabbit pAb at 1:1000. Secondary antibody: HRP Goat Anti-Rabbit IgG (H+L) at 1:5000. Lysates/proteins: 30ug per lane. Blocking buffer: 5% non-fat dry milk in TBST. Detection: ECL Enhanced Kit. Exposure time: 120s.

实验步骤

访问官网浏览详情: www.ablybio.cn