

# CD86 Rabbit pAb

货号: **AYP11035**

## 产品信息

反应	Human,Mouse,Rat
宿主	Rabbit
克隆性	Polyclonal
预测反应	<b>WB:</b> Human cells , Rattus norvegicus , Homo sapiens , Mus musculus <b>IHC:</b> Rattus norvegicus , Mus musculus , Homo sapiens <b>IF:</b> Mus musculus , Homo sapiens , Rattus norvegicus <b>FC:</b> Mus musculus <b>ICC:</b> Homo sapiens <b>IP:</b> Homo sapiens
应用	<a href="#">WB</a> <a href="#">IF/ICC</a>
推荐浓度	<b>WB:</b> 1:500 - 1:1000 <b>IF/ICC:</b> 1:50 - 1:200
理论分子量	12kDa/24kDa/28kDa/31kDa/37kDa
实测分子量	60KDa
形式	Liquid
保存条件	Store at -20°C. Avoid freeze / thaw cycles. Buffer: PBS with 0.05% proclin300,50% glycerol,pH7.3.
偶联物	Unconjugated
阳性对照	Daudi
细胞定位	Cell membrane,Single-pass type I membrane protein
纯化	Affinity purification

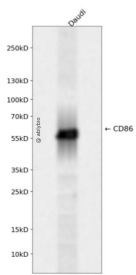
## 抗原信息

抗原信息	Recombinant fusion protein containing a sequence corresponding to amino acids 25-133 of human CD86 (NP_787058.4).
序列	PLKIQAYFNETADLPCQFANSQNQSLSELVFWQDQENLVLNEVYLGKEKFDVHVKYMGRTSFDSDSWTLRLHNLQIKDKGLYQCIIHHKPTGMIRIHQMNSELSVL

## 靶点信息

研究背景	This gene encodes a type I membrane protein that is a member of the immunoglobulin superfamily. This protein is expressed by antigen-presenting cells, and it is the ligand for two proteins at the cell surface of T cells, CD28 antigen and cytotoxic T-lymphocyte-associated protein 4. Binding of this protein with CD28 antigen is a costimulatory signal for activation of the T-cell. Binding of this protein with cytotoxic T-lymphocyte-associated protein 4 negatively regulates T-cell activation and diminishes the immune response. Alternative splicing results in several transcript variants encoding different isoforms.
基因ID	942
基因名	CD86
Swiss	P42081
别名	B7-2;B7.2;B70;CD28LG2;LAB72;CD86

## 产品验证



Western blot analysis of CD86 expressed in Daudi using CD86 Rabbit pAb at 1:1000. Secondary antibody: HRP Goat Anti-Rabbit IgG (H+L) at 1:5000. Lysates/proteins: 30ug per lane. Blocking buffer: 5% non-fat dry milk in TBST. Detection: ECL Enhanced Kit. Exposure time: 120s.

## 实验步骤

访问官网浏览详情: [www.ablybio.cn](http://www.ablybio.cn)