

# Lamin B1 Rabbit pAb

货号: **AYP11026**

## 产品信息

反应	Human,Mouse,Rat
宿主	Rabbit
克隆性	Polyclonal
预测反应	<b>WB:</b> HepG2 , Homo sapiens , Mus musculus , Rattus norvegicus <b>IP:</b> Mus musculus <b>IHC:</b> Mus musculus , Homo sapiens <b>IF:</b> Homo sapiens <b>IB:</b> Homo sapiens
应用	<a href="#">WB</a> <a href="#">IHC</a> <a href="#">IF/ICC</a> <a href="#">IP</a> <a href="#">ChIP</a>
推荐浓度	<b>WB:</b> 1:500 - 1:1000 <b>IHC:</b> 1:50 - 1:200 <b>IF/ICC:</b> 1:50 - 1:200 <b>IP:</b> 1:500 - 1:1000 <b>ChIP:</b> 1:500 - 1:1000
理论分子量	66kDa
实测分子量	68KDa/45KDa
形式	Liquid
保存条件	Store at -20°C. Avoid freeze / thaw cycles. Buffer: PBS with 0.01% thiomersal,50% glycerol,pH7.3.
偶联物	Unconjugated
阳性对照	HeLa,MCF7,Jurkat,L929,Mouse brain,Rat testis
细胞定位	Lipid-anchor,Nucleoplasmic side,Nucleus inner membrane
纯化	Affinity purification

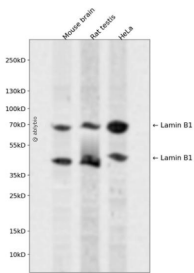
## 抗原信息

抗原信息	Recombinant fusion protein containing a sequence corresponding to amino acids 503-586 of human Lamin B1 (P20700).
序列	AGVTASPPTDLIWKNQNSWGTGEDVKVILKNSQGEEVAQRSTVFKTTIPEEEEEEEAAGVVVEELFHQQGTPRASNRS CAIM

## 靶点信息

研究背景	This gene encodes one of the two B-type lamin proteins and is a component of the nuclear lamina. A duplication of this gene is associated with autosomal dominant adult-onset leukodystrophy (ADLD). Alternative splicing results in multiple transcript variants.
基因ID	4001
基因名	LMNB1
Swiss	P20700
别名	ADLD;LMN;LMN2;LMNB;Lamin B1;LMNB1;lamin-B1

## 产品验证



Western blot analysis of Lamin B1 expressed in Mouse brain,Rat testis,HeLa using Lamin B1 Rabbit pAb at 1:1000. Secondary antibody: HRP Goat Anti-Rabbit IgG (H+L) at 1:5000. Lysates/proteins: 30ug per lane. Blocking buffer: 5% non-fat dry milk in TBST. Detection: ECL Enhanced Kit. Exposure time: 120 S.

## 实验步骤

访问官网浏览详情: [www.ablybio.cn](http://www.ablybio.cn)