

JNK1 Rabbit pAb

货号: **AYP11015**

产品信息

反应	Human,Mouse,Rat
宿主	Rabbit
克隆性	Polyclonal
预测反应	WB: Mouse heart tissue , Mus musculus , Homo sapiens , Rattus norvegicus , Bos taurus IHC: Mus musculus IF: Mus musculus qRT-PCR: Homo sapiens
应用	WB IHC IF/ICC
推荐浓度	WB: 1:500 - 1:1000 IHC: 1:50 - 1:200 IF/ICC: 1:50 - 1:200
理论分子量	35kDa/44kDa/48kDa
实测分子量	44KDa
形式	Liquid
保存条件	Store at -20°C. Avoid freeze / thaw cycles. Buffer: PBS with 0.05% proclin300,50% glycerol,pH7.3.
偶联物	Unconjugated
阳性对照	SH-SY5Y,Mouse kidney,Rat heart
细胞定位	Cytoplasm,Nucleus
纯化	Affinity purification

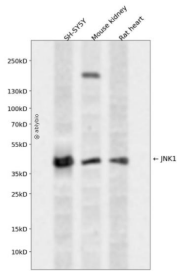
抗原信息

抗原信息	Recombinant fusion protein containing a sequence corresponding to amino acids 245-345 of human JNK1 (NP_620635.1).
序列	CPEFMKKLQPTVRTYVENRPKYAGYSFEKLFDPDVLFPADSEHNKLGKASQARDLLSKMLVIDASKRISVDEALQHPYINVWYDPSEAEAPPKIPDKQLDER

靶点信息

研究背景	The protein encoded by this gene is a member of the MAP kinase family. MAP kinases act as an integration point for multiple biochemical signals, and are involved in a wide variety of cellular processes such as proliferation, differentiation, transcription regulation and development. This kinase is activated by various cell stimuli, and targets specific transcription factors, and thus mediates immediate-early gene expression in response to cell stimuli. The activation of this kinase by tumor-necrosis factor alpha (TNF-alpha) is found to be required for TNF-alpha induced apoptosis. This kinase is also involved in UV radiation induced apoptosis, which is thought to be related to cytochrom c-mediated cell death pathway. Studies of the mouse counterpart of this gene suggested that this kinase play a key role in T cell proliferation, apoptosis and differentiation. Several alternatively spliced transcript variants encoding distinct isoforms have been reported.
基因ID	5599
基因名	MAPK8
Swiss	P45983
别名	MAPK8;JNK;JNK-46;JNK1;JNK1A2;JNK21B1/2;PRKM8;SAPK1;SAPK1c

产品验证



Western blot analysis of JNK1 expressed in SH-SY5Y, Mouse kidney, Rat heart using JNK1 Rabbit pAb at 1:1000. Secondary antibody: HRP Goat Anti-Rabbit IgG (H+L) at 1:5000. Lysates/proteins: 30ug per lane. Blocking buffer: 5% non-fat dry milk in TBST. Detection: ECL Enhanced Kit. Exposure time: 120s.

实验步骤

访问官网浏览详情: www.ablybio.cn