

Collagen I/COL1A1 Rabbit pAb

货号: **AYP11007**

产品信息

反应	Human,Mouse,Rat
宿主	Rabbit
克隆性	Polyclonal
预测反应	IF: Homo sapiens,Mus musculus , Rattus norvegicus WB: Mus musculus , mouse , Anatinae , Homo sapiens , Rattus norvegicus , Homo sapiens, Rattus norvegicus IHC: Homo sapiens , Mus musculus , Rattus norvegicus , Bovine
应用	WB IF/ICC IHC
推荐浓度	WB: 1:500 - 1:1000 IF/ICC: 1:50 - 1:200 IHC: 1:50 - 1:200
理论分子量	138kDa
实测分子量	139KDa/220KDa
形式	Liquid
保存条件	Store at -20°C. Avoid freeze / thaw cycles. Buffer: PBS with 0.05% proclin300,50% glycerol,pH7.3.
偶联物	Unconjugated
阳性对照	U-118 MG,HT-29(Negative control),Mouse ovary,Rat skin
细胞定位	Secreted,extracellular matrix,extracellular space
纯化	Affinity purification

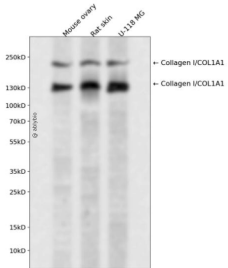
抗原信息

抗原信息	A synthetic peptide corresponding to a sequence within amino acids 1100-1200 of human Collagen I/COL1A1 (NP_000079.2).
序列	GEQGDRGIKGHARGFSGLQGPPGPPGSPGEGQPGSGASGPAGPRGPPGSAGAPGKDGLNGLPGPIGPPGPRGRTGDAGPVGPPGPPGPPGPPGPPSAGFDFSF

靶点信息

研究背景	This gene encodes the pro-alpha1 chains of type I collagen whose triple helix comprises two alpha1 chains and one alpha2 chain. Type I is a fibril-forming collagen found in most connective tissues and is abundant in bone, cornea, dermis and tendon. Mutations in this gene are associated with osteogenesis imperfecta types I-IV, Ehlers-Danlos syndrome type VIIA, Ehlers-Danlos syndrome Classical type, Caffey Disease and idiopathic osteoporosis. Reciprocal translocations between chromosomes 17 and 22, where this gene and the gene for platelet-derived growth factor beta are located, are associated with a particular type of skin tumor called dermatofibrosarcoma protuberans, resulting from unregulated expression of the growth factor. Two transcripts, resulting from the use of alternate polyadenylation signals, have been identified for this gene.
基因ID	1277
基因名	COL1A1
Swiss	P02452
别名	COL1A1;EDSC;OI1;OI2;OI3;OI4

产品验证



Western blot analysis of Collagen I/COL1A1 expressed in Mouse ovary, Rat skin, U-118 MG using Collagen I/COL1A1 Rabbit pAb at 1:1000. Secondary antibody: HRP Goat Anti-Rabbit IgG (H+L) at 1:500. Lysates/proteins: 30ug per lane. Blocking buffer: 5% non-fat dry milk in TBST. Detection: ECL Enhanced Kit. Exposure time: 120s.

实验步骤

访问官网浏览详情: www.ablybio.cn