

# TGF beta 1 Rabbit pAb

货号: **AYP10994**

## 产品信息

反应	Human,Mouse,Rat
宿主	Rabbit
克隆性	Polyclonal
预测反应	<b>WB:</b> Rat heart , Homo sapiens , Mus musculus , Rattus norvegicus , Sus scrofa <b>IHC:</b> Mus musculus , Rattus norvegicus , Homo sapiens <b>IF:</b> Rattus norvegicus <b>ICH:</b> Rattus norvegicus <b>ELISA:</b> Homo sapiens
应用	<a href="#">WB</a>
推荐浓度	<b>WB:</b> 1:1000 - 1:5000
理论分子量	44kDa
实测分子量	12KDa/25KDa/45-60KDa
形式	Liquid
保存条件	Store at -20°C. Avoid freeze / thaw cycles. Buffer: PBS with 0.05% proclin300,50% glycerol,pH7.3.
偶联物	Unconjugated
阳性对照	K-562,Mouse spleen,Rat lung
细胞定位	Secreted,extracellular matrix,extracellular space
纯化	Affinity purification

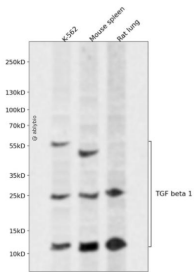
## 抗原信息

抗原信息	A synthetic peptide corresponding to a sequence within amino acids 291-390 of human TGF beta 1 (NP_00651.3).
序列	KNCCVRLYIDFRKDLGWKWIHEPKGYHANFCLGPCPYIWSLDTQYSKVLALYNQHNPGASAAPCCVPQALEPLPIVYYVG RKPKVEQLSNMIVRSCKCS

## 靶点信息

研究背景	This gene encodes a member of the transforming growth factor beta (TGFB) family of cytokines, which are multifunctional peptides that regulate proliferation, differentiation, adhesion, migration, and other functions in many cell types. Many cells have TGFB receptors, and the protein positively and negatively regulates many other growth factors. The secreted protein is cleaved into a latency-associated peptide (LAP) and a mature TGFB1 peptide, and is found in either a latent form composed of a TGFB1 homodimer, a LAP homodimer, and a latent TGFB1-binding protein, or in an active form composed of a TGFB1 homodimer. The mature peptide may also form heterodimers with other TGFB family members. This gene is frequently upregulated in tumor cells, and mutations in this gene result in Camurati-Engelmann disease.
基因ID	7040
基因名	TGFB1
Swiss	P01137
别名	TGFB1;CED;DPD1;LAP;TGFB;TGFBeta;TGF-β

## 产品验证



Western blot analysis of TGF beta 1 expressed in K-562, Mouse spleen, Rat lung using TGF beta 1 Rabbit pAb at 1:1000. Secondary antibody: HRP Goat Anti-Rabbit IgG (H+L) at 1:5000. Lysates/proteins: 30ug per lane. Blocking buffer: 5% non-fat dry milk in TBST. Detection: ECL Enhanced Kit. Exposure time: 120s.

## 实验步骤

访问官网浏览详情: [www.ablybio.cn](http://www.ablybio.cn)