

— ABLYBIO, Help Your Research



IL1 β Rabbit pAb

货号: **AYP10980**

产品信息

反应	Human,Mouse
宿主	Rabbit
克隆性	Polyclonal
预测反应	<p>WB: Mus musculus , Homo sapiens , Rattus norvegicus , mouse , mmu , Homo sapiens , Rattus norvegicus , Gallus gallus , Danio rerio , Hippocampal</p> <p>IHC: Mus musculus , Homo sapiens , Rattus norvegicus</p> <p>IF: Mus musculus , Rattus norvegicus , Homo sapiens , Sus domesticus</p> <p>IP: Rattus norvegicus</p> <p>ELISA: Homo sapiens , Ovis aries</p>
应用	WB
推荐浓度	WB: 1:500 - 1:1000
理论分子量	30kDa
实测分子量	35KDa/17KDa
形式	Liquid
保存条件	Store at -20°C. Avoid freeze / thaw cycles. Buffer: PBS with 0.05% proclin300,0.05% BSA,50% glycerol,pH7.3.
偶联物	Unconjugated
阳性对照	THP-1
细胞定位	Cytoplasm,Cytoplasmic vesicle,Lysosome,Secreted,autophagosome,cytosol,exosome
纯化	Affinity purification

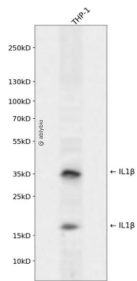
抗原信息

抗原信息	Recombinant fusion protein containing a sequence corresponding to amino acids 117-269 of human IL1 β (NP_000567.1).
------	---

靶点信息

研究背景	The protein encoded by this gene is a member of the interleukin 1 cytokine family. This cytokine is produced by activated macrophages as a proprotein, which is proteolytically processed to its active form by caspase 1 (CASP1/ICE). This cytokine is an important mediator of the inflammatory response, and is involved in a variety of cellular activities, including cell proliferation, differentiation, and apoptosis. The induction of cyclooxygenase-2 (PTGS2/COX2) by this cytokine in the central nervous system (CNS) is found to contribute to inflammatory pain hypersensitivity. This gene and eight other interleukin 1 family genes form a cytokine gene cluster on chromosome 2.
基因ID	3553
基因名	IL1B
Swiss	P01584 (https://www.uniprot.org/uniprotkb/P01584/entry)
别名	IL-1,IL1-BETA,IL1F2,IL1 beta,IL1B,IL1 β Rabbit pAb,Catabolin

产品验证



Western blot analysis of IL1 β expressed in THP-1 using IL1 β Rabbit pAb at 1:1000. Secondary antibody: HRP Goat Anti-Rabbit IgG (H+L) at 1:5000. Lysates/proteins: 30ug per lane. Blocking buffer: 5% non-fat dry milk in TBST. Detection: ECL Enhanced Kit. Exposure time: 120s.

实验步骤

访问官网浏览详情: www.ablybio.cn (<https://www.ablybio.cn/www.ablybio.cn>)