

— ABLYBIO, Help Your Research



# DiMethyl-Histone H3-K79 Rabbit pAb

货号: **AYP10940**

## 产品信息

反应	Human,Mouse,Rat
宿主	Rabbit
克隆性	Polyclonal
预测反应	<b>IF:</b> Mouse testis <b>WB:</b> HeLa , Saccharomyces cerevisiae , Mus musculus、 Rattus norvegicus , Homo sapiens
应用	WB IHC IP CHIP
推荐浓度	<b>WB:</b> 1:500 - 1:1000 <b>IHC:</b> 1:50 - 1:100 <b>IF/ICC:</b> 1:50 - 1:200 <b>IP:</b> 1:500 - 1:1000 <b>ChIP:</b> 1:500 - 1:1000
理论分子量	15kDa
实测分子量	17kDa
形式	Liquid
保存条件	Store at -20°C. Avoid freeze / thaw cycles. Buffer: PBS with 0.01% thiomersal,50% glycerol,pH7.3.
偶联物	Unconjugated
阳性对照	HeLa
细胞定位	Chromosome,Nucleus
纯化	Affinity purification

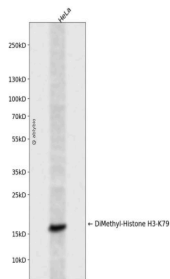
## 抗原信息

抗原信息	A synthetic dimethylated peptide around K79 of human Histone H3 (NP_003520.1).
------	--

## 靶点信息

研究背景	Histones are basic nuclear proteins that are responsible for the nucleosome structure of the chromosomal fiber in eukaryotes. Nucleosomes consist of approximately 146 bp of DNA wrapped around a histone octamer composed of pairs of each of the four core histones (H2A, H2B, H3, and H4). The chromatin fiber is further compacted through the interaction of a linker histone, H1, with the DNA between the nucleosomes to form higher order chromatin structures. This gene is intronless and encodes a replication-dependent histone that is a member of the histone H3 family. Transcripts from this gene lack polyA tails; instead, they contain a palindromic termination element. This gene is located separately from the other H3 genes that are in the histone gene cluster on chromosome 6p22-p21.3.
基因ID	8290
基因名	HIST3H3
Swiss	Q16695 ( <a href="https://www.uniprot.org/uniprotkb/Q16695/entry">https://www.uniprot.org/uniprotkb/Q16695/entry</a> )
别名	H3.4,H3/g,H3FT,H3t,HIST3H3,Histone H3,HIST1H3A,DiMethyl-Histone H3-K79 Rabbit pAb,Histone H3.4

## 产品验证



Western blot analysis of DiMethyl-Histone H3-K79 expressed in HeLa using DiMethyl-Histone H3-K79 Rabbit pAb at 1:1000. Secondary antibody: HRP Goat Anti-Rabbit IgG (H+L) at 1:5000. Lysates/proteins: 30ug per lane. Blocking buffer: 5% non-fat dry milk in TBST. Detection: ECL Enhanced Kit. Exposure time: 120s.

## 实验步骤

访问官网浏览详情: [www.ablybio.cn](http://www.ablybio.cn) (<https://www.ablybio.cn/www.ablybio.cn>)