

— ABLYBIO, Help Your Research



TLR4 Rabbit pAb

货号: **AYP10923**

产品信息

反应	Human,Mouse,Rat
宿主	Rabbit
克隆性	Polyclonal
预测反应	<p>WB: Raw264.7 , Rat spinal cord , Mouse cells , BV2 , Mus musculus , Homo sapiens , Rattus norvegicus , Sus scrofa , Anatinae</p> <p>IHC: Mouse kidney , Mus musculus , Rattus norvegicus , Homo sapiens</p> <p>IF: Mus musculus , Homo sapiens</p> <p>IB: Homo sapiens</p> <p>FC: Homo sapiens</p>
应用	WB IF/ICC
推荐浓度	<p>WB: 1:1000 - 1:5000</p> <p>IF/ICC: 1:50 - 1:200</p>
理论分子量	73kDa/91kDa/95kDa
实测分子量	110KDa
形式	Liquid
保存条件	Store at -20°C. Avoid freeze / thaw cycles. Buffer: PBS with 0.05% proclin300,50% glycerol,pH7.3.
偶联物	Unconjugated
阳性对照	SH-SY5Y
细胞定位	Cell membrane,Single-pass type I membrane protein
纯化	Affinity purification

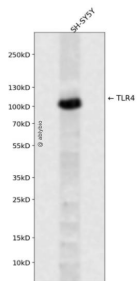
抗原信息

抗原信息	Recombinant fusion protein containing a sequence corresponding to amino acids 470-630 of human TLR4 (NP_612564.1).
------	--

靶点信息

研究背景	The protein encoded by this gene is a member of the Toll-like receptor (TLR) family which plays a fundamental role in pathogen recognition and activation of innate immunity. TLRs are highly conserved from <i>Drosophila</i> to humans and share structural and functional similarities. They recognize pathogen-associated molecular patterns that are expressed on infectious agents, and mediate the production of cytokines necessary for the development of effective immunity. The various TLRs exhibit different patterns of expression. This receptor has been implicated in signal transduction events induced by lipopolysaccharide (LPS) found in most gram-negative bacteria. Mutations in this gene have been associated with differences in LPS responsiveness. Multiple transcript variants encoding different isoforms have been found for this gene.
基因ID	7099
基因名	TLR4
Swiss	O00206 (https://www.uniprot.org/uniprotkb/O00206/entry)
别名	TLR4,ARMD10,CD284,TLR-4,TOLL,TLR4 Rabbit pAb,hToll

产品验证



Western blot analysis of TLR4 expressed in SH-SY5Y using TLR4 Rabbit pAb at 1:1000. Secondary antibody: HRP Goat Anti-Rabbit IgG (H+L) at 1:5000. Lysates/proteins: 30ug per lane. Blocking buffer: 5% non-fat dry milk in TBST. Detection: ECL Enhanced Kit. Exposure time: 120s.

实验步骤

访问官网浏览详情: www.ablybio.cn (<https://www.ablybio.cn/www.ablybio.cn>)