

— ABLYBIO, Help Your Research



STAT1 Rabbit pAb

货号: **AYP10922**

产品信息

反应	Human,Mouse,Rat
宿主	Rabbit
克隆性	Polyclonal
预测反应	IF: HeLa cells WB: Human chronic myeloid leukemia cells , Mus musculus , Homo sapiens IP: Mus musculus ChIP: Homo sapiens Co-IP: Mus musculus
应用	WB IHC IF/ICC IP
推荐浓度	WB: 1:100 - 1:500 IHC: 1:50 - 1:200 IF/ICC: 1:50 - 1:200 IP: 1:500 - 1:1000
理论分子量	83kDa/87kDa
实测分子量	91KDa
形式	Liquid
保存条件	Store at -20°C. Avoid freeze / thaw cycles. Buffer: PBS with 0.01% thiomersal,50% glycerol,pH7.3.
偶联物	Unconjugated
阳性对照	HeLa,Mouse spleen,Rat spleen
细胞定位	Cytoplasm,Nucleus
纯化	Affinity purification

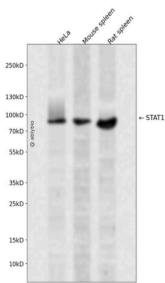
抗原信息

抗原信息	A synthetic peptide corresponding to a sequence within amino acids 650-750 of human STAT1 (NP_00933 0.1).
------	---

靶点信息

研究背景	The protein encoded by this gene is a member of the STAT protein family. In response to cytokines and growth factors, STAT family members are phosphorylated by the receptor associated kinases, and then form homo- or heterodimers that translocate to the cell nucleus where they act as transcription activators. This protein can be activated by various ligands including interferon-alpha, interferon-gamma, EGF, PDGF and IL6. This protein mediates the expression of a variety of genes, which is thought to be important for cell viability in response to different cell stimuli and pathogens. Two alternatively spliced transcript variants encoding distinct isoforms have been described.
基因ID	6772
基因名	STAT1
Swiss	P42224 (https://www.uniprot.org/uniprotkb/P42224/entry)
别名	CANDF7,IMD31A,IMD31B,IMD31C,ISGF-3,STAT91,STAT1 alpha,STAT1,STAT1 Rabbit pAb,Transcription factor ISGF-3 components p91/p84

产品验证



Western blot analysis of STAT1 expressed in HeLa, Mouse spleen, Rat spleen using STAT1 Rabbit pAb at 1:1000. Secondary antibody: HRP Goat Anti-Rabbit IgG (H+L) at 1:5000. Lysates/proteins: 30ug per lane. Blocking buffer: 5% non-fat dry milk in TBST. Detection: ECL Enhanced Kit. Exposure time: 120s.

实验步骤

访问官网浏览详情: www.ablybio.cn (<https://www.ablybio.cn/www.ablybio.cn>)