

CLUH Rabbit pAb

货号: **AYP10916**

产品信息

反应	Human,Mouse
宿主	Rabbit
克隆性	Polyclonal
预测反应	
应用	WB IHC IF/ICC
推荐浓度	WB: 1:1000 - 1:4000 IHC: 1:50 - 1:200 IF/ICC: 1:50 - 1:200
理论分子量	146kDa
实测分子量	180kDa
形式	Liquid
保存条件	Store at -20°C. Avoid freeze / thaw cycles. Buffer: PBS with 0.02% sodium azide,50% glycerol,pH7.3.
偶联物	Unconjugated
阳性对照	HeLa,K-562,MCF7,U-251MG,LO2
细胞定位	Cytoplasm,Cytoplasmic granule
纯化	Affinity purification

抗原信息

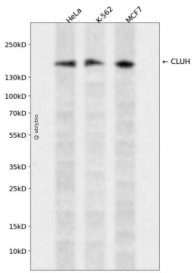
抗原信息	Recombinant fusion protein containing a sequence corresponding to amino acids 1120-1309 of human CLUH (NP_056044.3).
序列	YDLSLRFLENALAVSTKYHGPKALKVALSHHLVARVYESKAEFRSALQHEKEGYTIYKTQLGEDHEKTKESSEYLKCLTQQA VALQRTMNEIYRNGSSANIPPLKFTAPSMASVLEQLNVINGILFIPLSQKDLENLKAEVARRHQLQEASRNRDRAEPMATEP APAGAPGDLGSQPPAAKDPSPSVQG

靶点信息

研究背景	mRNA-binding protein involved in proper cytoplasmic distribution of mitochondria. Specifically binds mRNA of nuclear-encoded mitochondrial proteins in the cytoplasm and regulates transport or translation of these transcripts close to mitochondria, playing a role in mitochondrial biogenesis.
------	---

基因ID	23277
基因名	CLUH
Swiss	O75153
别名	CLUH;CLU1;KIAA0664

产品验证



Western blot analysis of CLUH expressed in HeLa, K-562, MCF7 using CLUH Rabbit pAb at 1:1000. Secondary antibody: HRP Goat Anti-Rabbit IgG (H+L) at 1:5000. Lysates/proteins: 30ug per lane. Blocking buffer: 5% non-fat dry milk in TBST. Detection: ECL Enhanced Kit. Exposure time: 120s.

实验步骤

访问官网浏览详情: www.ablybio.cn