

WDR81 Rabbit pAb

货号: **AYP10905**

产品信息

反应	Human,Mouse,Rat
宿主	Rabbit
克隆性	Polyclonal
预测反应	
应用	WB
推荐浓度	WB: 1:500 - 1:1000
理论分子量	74kDa/77kDa/79kDa/95kDa/197kDa/211kDa
实测分子量	260KDa
形式	Liquid
保存条件	Store at -20°C. Avoid freeze / thaw cycles. Buffer: PBS with 0.05% proclin300,50% glycerol,pH7.3.
偶联物	Unconjugated
阳性对照	HeLa
细胞定位	Mitochondrion
纯化	Affinity purification

抗原信息

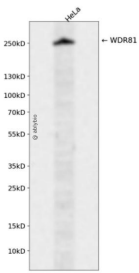
抗原信息	Recombinant fusion protein containing a sequence corresponding to amino acids 360-600 of human WDR 81 (NP_689561.2).
序列	RIGQEMVQQLHSEPVATFFQVFSQLHELRRQDLKLDPAGRGEGQLPQVVFSDGQQRVPDALLDELQKVFTLEMAYTIY VPFSCLLGDIIRKIIPNHELVGELAALYLEISIPSSRNPAVEPTMPGTGPEWDPHGGGCPQDDGHSGTFGSVLVGNRIQIP NDSRPENPGPLGPISGVGGGGLGSGSDDNALKQELPRSVHGLSGNWLAYWQYEIGVSQQDAHFHFHQIRLQSFPGHSG AV

靶点信息

研究背景	This gene encodes a multi-domain transmembrane protein, which is predominantly expressed in the brain . Mutations in this gene are associated with autosomal recessive cerebellar ataxia, mental retardation, an d dysequilibrium syndrome-2. Alternatively spliced transcript variants encoding different isoforms have b een found for this gene.
------	---

基因ID	124997
基因名	WDR81
Swiss	Q562E7
别名	WDR81;CAMRQ2;PPP1R166;SORF-2

产品验证



Western blot analysis of WDR81 expressed in HeLa using WDR81 Rabbit pAb at 1:1000. Secondary antibody: HRP Goat Anti-Rabbit IgG (H+L) at 1:5000. Lysates/proteins: 30ug per lane. Blocking buffer: 5% non-fat dry milk in TBST. Detection: ECL Enhanced Kit. Exposure time: 120s.

实验步骤

访问官网浏览详情: www.ablybio.cn