

MCM5 Rabbit pAb

货号: **AYP10902**

产品信息

反应	Human,Mouse,Rat
宿主	Rabbit
克隆性	Polyclonal
预测反应	
应用	WB IHC IF/ICC IP
推荐浓度	WB: 1:500 - 1:2000 IHC: 1:50 - 1:200 IF/ICC: 1:50 - 1:200 IP: 1:500 - 1:1000
理论分子量	82kDa
实测分子量	100kDa
形式	Liquid
保存条件	Store at -20°C. Avoid freeze / thaw cycles. Buffer: PBS with 0.02% sodium azide,50% glycerol,pH7.3.
偶联物	Unconjugated
阳性对照	Raji,HL-60,HeLa,SW620,Mouse kidney,Rat kidney
细胞定位	Nucleus
纯化	Affinity purification

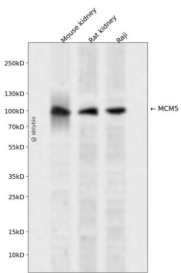
抗原信息

抗原信息	Recombinant fusion protein containing a sequence corresponding to amino acids 1-230 of human MCM5 (NP_006730.2).
序列	MSGFDDPGIFYSDSFGGDAQADEGQARKSQLQRRFKEFLRQYRVGTDRTGFTFKYRDELKRHYNLGEYWIEVEMEDLASFDEDLADYLYKQPAEHLQLLEEAKEVADEVTRPRPSGEEVLQDIQVMLKSDASPSIRSLSKSDMMSHLVKIPGIIAASAVRAKATRISIQCRSCRNTLTNIAMRPGLEGYALPRKCNTDQAGRPKCLDPYFIMPDKCKCVDFQTLKLQ

靶点信息

研究背景	The protein encoded by this gene is structurally very similar to the CDC46 protein from <i>S. cerevisiae</i> , a protein involved in the initiation of DNA replication. The encoded protein is a member of the MCM family of chromatin-binding proteins and can interact with at least two other members of this family. The encoded protein is upregulated in the transition from the G0 to G1/S phase of the cell cycle and may actively participate in cell cycle regulation.
基因ID	4174
基因名	MCM5
Swiss	P33992
别名	MCM5;CDC46;P1-CDC46

产品验证



Western blot analysis of MCM5 expressed in Mouse kidney,Rat kidney,Raji using MCM5 Rabbit pAb at 1:1000. Secondary antibody: HRP Goat Anti-Rabbit IgG (H+L) at 1:5000. Lysates/proteins: 30ug per lane. Blocking buffer: 5% non-fat dry milk in TBST. Detection: ECL Enhanced Kit. Exposure time: 120s.

实验步骤

访问官网浏览详情: www.ablybio.cn