

# SPDEF Rabbit pAb

货号: **AYP10899**

## 产品信息

反应	Human,Rat
宿主	Rabbit
克隆性	Polyclonal
预测反应	
应用	WB IHC IF/ICC
推荐浓度	<b>WB:</b> 1:500 - 1:1000 <b>IHC:</b> 1:50 - 1:200 <b>IF/ICC:</b> 1:50 - 1:100
理论分子量	35kDa/37kDa
实测分子量	50kDa
形式	Liquid
保存条件	Store at -20°C. Avoid freeze / thaw cycles. Buffer: PBS with 0.02% sodium azide,50% glycerol,pH7.3.
偶联物	Unconjugated
阳性对照	Rat ovary
细胞定位	Nucleus
纯化	Affinity purification

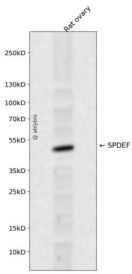
## 抗原信息

抗原信息	Recombinant fusion protein containing a sequence corresponding to amino acids 1-335 of human SPDEF (NP_036523.1).
序列	MGSASPGLSSVSPSHLLLPPDVTVSRTGLEKAAAGAVGLERRDWSPSPATPEQGLSAFYLSYFDMLYPEDSSWAAKAPG ASSREEPPEEPEQCPVIDSQAPAGSLDLVPGGLTLEEHSLEQVQSMVVGEVLKDIETACKLLNITADPMDWSPSNVQKWLL WTEHQYRLPPMGKAFQELAGKELCAMSEEQFRQRSPLGGDVLHAHLDIWKSAAWMKERTSPGAIHYCASTSEESWTDS EVDSSCSGQPIHLWQFLKELLLKPHSYGRFIRWLNKEKGIFKIEDSAQVARLWGIRKNRPAMNYDKLSRSIRQYYKGGIIRKP DISQRLVYQFVHPI

## 靶点信息

研究背景	The protein encoded by this gene belongs to the ETS family of transcription factors. It is highly expressed in the prostate epithelial cells, and functions as an androgen-independent transactivator of prostate-specific antigen (PSA) promoter. Higher expression of this protein has also been reported in brain, breast, lung and ovarian tumors, compared to the corresponding normal tissues, and it shows better tumor-association than other cancer-associated molecules, making it a more suitable target for developing specific cancer therapies. Alternatively spliced transcript variants encoding different isoforms have been found for this gene.
基因ID	25803
基因名	SPDEF
Swiss	O95238
别名	SPDEF;PDEF;bA375E1.3

## 产品验证



Western blot analysis of SPDEF expressed in Rat ovary using SPDEF Rabbit pAb at 1:1000. Secondary antibody: HRP Goat Anti-Rabbit IgG (H+L) at 1:5000. Lysates/proteins: 30ug per lane. Blocking buffer: 5% non-fat dry milk in TBST. Detection: ECL Enhanced Kit. Exposure time: 120s.

## 实验步骤

访问官网浏览详情: [www.ablybio.cn](http://www.ablybio.cn)