

GOLGA1 Rabbit pAb

货号: AYP10895

产品信息

反应	Human,Mouse,Rat
宿主	Rabbit
克隆性	Polyclonal
预测反应	
应用	WB IF/ICC
推荐浓度	WB: 1:500 - 1:2000 IF/ICC: 1:50 - 1:200
理论分子量	88kDa
实测分子量	105kDa
形式	Liquid
保存条件	Store at -20°C. Avoid freeze / thaw cycles. Buffer: PBS with 0.01% thiomersal,50% glycerol,pH7.3.
偶联物	Unconjugated
阳性对照	HepG2,HeLa,SW480,Mouse brain,Mouse heart,Mouse kidney,Mouse liver,Rat pancreas
细胞定位	Golgi apparatus,Golgi stack membrane,Peripheral membrane protein
纯化	Affinity purification

抗原信息

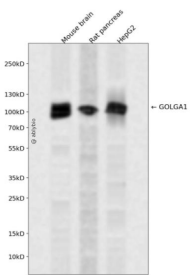
抗原信息	Recombinant fusion protein containing a sequence corresponding to amino acids 1-300 of human GOLGA 1 (NP_002068.1).
序列	MFAKLKKKIAEETAVAQRPGGATRIPRSVSKESVASMGADSGDDFASDGSSSREDLSSQLLRNEQIRKLEARLSDYAEQVRNLQKIKEKLEIALEKHQDSSMRKFQEQNETFQANRAKMAEGLALALARKDQEWSEKMDQLEKEKNILTAQLQEMKNQSMNLFQRRDEMDELEGFQQQELSKIHKHMLLKKEESLGKMEQELEARTRELSRTQEELMNSNQMSDDLQKLEELQRHYS TLEEQRDHVIASKTGAESKITALEQKEQELQALIQLSIDLQKVTAETQEKEDVITHLQEKV

靶点信息

研究背景	The Golgi apparatus, which participates in glycosylation and transport of proteins and lipids in the secretory pathway, consists of a series of stacked cisternae (flattened membrane sacs). Interactions between the Golgi and microtubules are thought to be important for the reorganization of the Golgi after it fragments during mitosis. This gene encodes one of the golgins, a family of proteins localized to the Golgi. This encoded protein is associated with Sjogren's syndrome.
------	--

基因ID	2800
基因名	GOLGA1
Swiss	Q92805
别名	GOLGA1;golgin-97;golgin A1

产品验证



Western blot analysis of GOLGA1 expressed in Mouse brain,Rat pancreas,HepG2 using GOLGA1 Rabbit pAb at 1:1000. Secondary antibody: HRP Goat Anti-Rabbit IgG (H+L) at 1:5000. Lysates/proteins: 30ug per lane. Blocking buffer: 5% non-fat dry milk in TBST. Detection: ECL Enhanced Kit. Exposure time: 12 0s.

实验步骤

访问官网浏览详情: www.ablybio.cn