

PDE10A Rabbit pAb

货号: **AYP10887**

产品信息

反应	Human,Rat
宿主	Rabbit
克隆性	Polyclonal
预测反应	
应用	WB IF/ICC
推荐浓度	WB: 1:500 - 1:2000 IF/ICC: 1:50 - 1:200
理论分子量	88kDa/89kDa
实测分子量	88kDa
形式	Liquid
保存条件	Store at -20°C. Avoid freeze / thaw cycles. Buffer: PBS with 0.01% thiomersal,50% glycerol,pH7.3.
偶联物	Unconjugated
阳性对照	Rat brain
细胞定位	Cytoplasm
纯化	Affinity purification

抗原信息

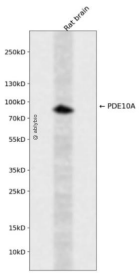
抗原信息	Recombinant fusion protein containing a sequence corresponding to amino acids 23-200 of human PDE10 A (NP_001124162.1).
序列	SLTDEKVKAYLSLHPQVLDEFVSESVSAETVEKWLKRKNNKSEDESAPKEVSRYQDTNMQGVVYELNSYIEQRLDTGGD NQLLLYELSSIIKIATKADGFALYFLGECNNSLCIFTPPGIKEGKPRILIPAGPITQGTTVSAYVAKSRKTLLEDILGDERFPRGT GLESGTRIQSVLC

靶点信息

研究背景	The protein encoded by this gene belongs to the cyclic nucleotide phosphodiesterase family. It plays a role in signal transduction by regulating the intracellular concentration of cyclic nucleotides. This protein can hydrolyze both cAMP and cGMP to the corresponding nucleoside 5' monophosphate, but has higher affinity for cAMP, and is more efficient with cAMP as substrate. Alternatively spliced transcript variants have been described for this gene.
------	--

基因ID	10846
基因名	PDE10A
Swiss	Q9Y233
别名	PDE10A;ADSD2;HSPDE10A;IOLOD;LINC00473;PDE10A19

产品验证



Western blot analysis of PDE10A expressed in Rat brain using PDE10A Rabbit pAb at 1:1000. Secondary antibody: HRP Goat Anti-Rabbit IgG (H+L) at 1:5000. Lysates/proteins: 30ug per lane. Blocking buffer: 5% non-fat dry milk in TBST. Detection: ECL Enhanced Kit. Exposure time: 120s.

实验步骤

访问官网浏览详情: www.ablybio.cn