

# GNL1 Rabbit pAb

货号: **AYP10873**

## 产品信息

反应	Human,Mouse,Rat
宿主	Rabbit
克隆性	Polyclonal
预测反应	
应用	WB IHC
推荐浓度	<b>WB:</b> 1:500 - 1:2000 <b>IHC:</b> 1:100 - 1:200
理论分子量	47kDa/68kDa
实测分子量	69kDa
形式	Liquid
保存条件	Store at -20°C. Avoid freeze / thaw cycles. Buffer: PBS with 0.01% thiomersal,50% glycerol,pH7.3.
偶联物	Unconjugated
阳性对照	HeLa,Mouse brain,Mouse heart,Mouse kidney,Mouse liver
细胞定位	extracellular space,nucleus
纯化	Affinity purification

## 抗原信息

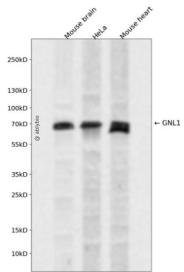
抗原信息	Recombinant fusion protein containing a sequence corresponding to amino acids 1-180 of human GNL1 ( NP_005266.2).
序列	MPRKKPFSVKQKKKQLQDKRERKRGLQDGLRSSNSRSGSRERREEQTDSDGESVTHHIRRLNQQPSQGLGPRGYDP NRYRLHFERDSREEVERRKRAAREQVLQPVSAELLELDIREVYQPGSVLDFPRRPPWSYEMSKEQLMSQEERSFQDYLGKI HGAYSSEKLSYFEHNLETWRQ

## 靶点信息

研究背景	The GNL1 gene, identified in the human major histocompatibility complex class I region, shows a high degree of similarity with its mouse counterpart. The GNL1 gene is located less than 2 kb centromeric to HLA-E, in the same transcriptional orientation. GNL1 is telomeric to HLA-B and HLA-C.
基因ID	2794

基因名	GNL1
Swiss	P36915
别名	GNL1;HSR1

## 产品验证



Western blot analysis of GNL1 expressed in Mouse brain, HeLa, Mouse heart using GNL1 Rabbit pAb at 1:1000. Secondary antibody: HRP Goat Anti-Rabbit IgG (H+L) at 1:5000. Lysates/proteins: 30ug per lane. Blocking buffer: 5% non-fat dry milk in TBST. Detection: ECL Enhanced Kit. Exposure time: 120s.

## 实验步骤

访问官网浏览详情: [www.ablybio.cn](http://www.ablybio.cn)