

FBLN1 Rabbit pAb

货号: **AYP10872**

产品信息

| | |
|-------|--|
| 反应 | Human,Mouse,Rat |
| 宿主 | Rabbit |
| 克隆性 | Polyclonal |
| 预测反应 | |
| 应用 | WB |
| 推荐浓度 | WB: 1:500 - 1:2000 |
| 理论分子量 | 61kDa/65kDa/74kDa/77kDa |
| 实测分子量 | 77KDa |
| 形式 | Liquid |
| 保存条件 | Store at -20°C. Avoid freeze / thaw cycles. Buffer: PBS with 0.01% thiomersal,50% glycerol,pH7.3. |
| 偶联物 | Unconjugated |
| 阳性对照 | HeLa,A-549,U-87MG,Mouse brain,Rat brain,Rat heart |
| 细胞定位 | Secreted,extracellular matrix,extracellular space |
| 纯化 | Affinity purification |

抗原信息

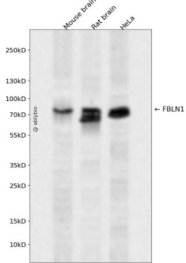
| | |
|------|--|
| 抗原信息 | Recombinant fusion protein containing a sequence corresponding to amino acids 570-670 of human FBLN 1 (NP_001987.2). |
| 序列 | RLPCHENRECSKLPRLITYYHLSFPTNIQAPAVVFRMGPSAVPGDSMQLAITGGNEEGFFTRKVSPhSGVWVLTkPVPEPRDLLLLTVKMDLSRHGTVSS |

靶点信息

| | |
|------|--|
| 研究背景 | Fibulin 1 is a secreted glycoprotein that becomes incorporated into a fibrillar extracellular matrix. Calcium-binding is apparently required to mediate its binding to laminin and nidogen. It mediates platelet adhesion via binding fibrinogen. Four splice variants which differ in the 3' end have been identified. Each variant encodes a different isoform, but no functional distinctions have been identified among the four variants. |
| 基因ID | 2192 |

| | |
|-------|----------------------------|
| 基因名 | FBLN1 |
| Swiss | P23142 |
| 别名 | FBLN1;FBLN;FIBL1;fibulin-1 |

产品验证



Western blot analysis of FBLN1 expressed in Mouse brain,Rat brain,HeLa using FBLN1 Rabbit pAb at 1:1 000. Secondary antibody: HRP Goat Anti-Rabbit IgG (H+L) at 1:5000. Lysates/proteins: 30ug per lane. Blocking buffer: 5% non-fat dry milk in TBST. Detection: ECL Enhanced Kit. Exposure time: 120s.

实验步骤

访问官网浏览详情: www.ablybio.cn