

RFX1 Rabbit pAb

货号: **AYP10867**

产品信息

反应	Human
宿主	Rabbit
克隆性	Polyclonal
预测反应	
应用	WB
推荐浓度	WB: 1:500 - 1:2000
理论分子量	104kDa
实测分子量	130kDa
形式	Liquid
保存条件	Store at -20°C. Avoid freeze / thaw cycles. Buffer: PBS with 0.01% thiomersal, 50% glycerol, pH 7.3.
偶联物	Unconjugated
阳性对照	LO2
细胞定位	Nucleus
纯化	Affinity purification

抗原信息

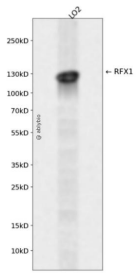
抗原信息	A synthetic peptide corresponding to a sequence within amino acids 200-300 of human RFX1 (NP_002909.4).
序列	QQVHSPPEQSPVQANSSSSKTAGAPTGTVPQQLQVHGVQSVPTQERSVVQATPQAPKPGPVQPLTVQGLQPVHVAQEVQQLQQVPVPHVYSSQVQYVEG

靶点信息

研究背景	This gene encodes a member of the regulatory factor X (RFX) family of transcription factors, which are characterized by a winged-helix DNA-binding domain. The encoded transcription factor contains an N-terminal activation domain and a C-terminal repression domain, and may activate or repress target gene expression depending on cellular context. This transcription factor has been shown to regulate a wide variety of genes involved in immunity and cancer, including the MHC class II genes and genes that may be involved in cancer progression. This gene exhibits altered expression in glioblastoma and the autoimmune disease systemic lupus erythematosus (SLE).
------	--

基因ID	5989
基因名	RFX1
Swiss	P22670
别名	RFX1;EFC;RFX

产品验证



Western blot analysis of RFX1 expressed in LO2 using RFX1 Rabbit pAb at 1:1000. Secondary antibody: HRP Goat Anti-Rabbit IgG (H+L) at 1:5000. Lysates/proteins: 30ug per lane. Blocking buffer: 5% non-fat dry milk in TBST. Detection: ECL Enhanced Kit. Exposure time: 120s.

实验步骤

访问官网浏览详情: www.ablybio.cn