

# RHBDL1 Rabbit pAb

货号: **AYP10857**

## 产品信息

反应	Human,Mouse,Rat
宿主	Rabbit
克隆性	Polyclonal
预测反应	
应用	WB
推荐浓度	<b>WB:</b> 1:500 - 1:2000
理论分子量	41kDa/48kDa
实测分子量	48kDa
形式	Liquid
保存条件	Store at -20°C. Avoid freeze / thaw cycles. Buffer: PBS with 0.01% thiomersal,50% glycerol,pH7.3.
偶联物	Unconjugated
阳性对照	Mouse brain,Mouse kidney,Mouse testis,Rat brain,Rat kidney
细胞定位	Membrane,Multi-pass membrane protein
纯化	Affinity purification

## 抗原信息

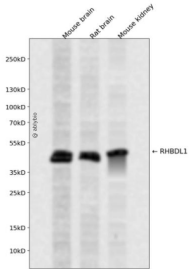
抗原信息	Recombinant fusion protein containing a sequence corresponding to amino acids 1-200 of human RHBDL 1 (O75783).
序列	MGRVEDGGTTEELEDWDPGTSALPAPGIKQGPREQTGTGPLSQKCWEPEPDAPSQPGPALWSRGRARTQALAGGSSL QLDPENTGFIGADTFTGLVHSHHELPDPAKLDMLVALAQSQNEQGQVCYQELVDLISSKRSSSFKRAIANGQRALPRDGP LDEPGLGVYKRFVRYVAYEILPCEVDRRWYFYRHRSCPPVFM

## 靶点信息

研究背景	This gene encodes a protein similar to Rhomboid in Drosophila which is involved in signalling in the Spitz/epidermal growth factor receptor/mitogen-activated protein kinase pathway. The Rhomboid family of proteins consists of intramembrane serine proteases containing several transmembrane domains. Alternative splicing results in multiple transcript variants encoding different isoforms.
基因ID	9028

基因名	RHBDL1
Swiss	O75783
别名	RHBDL1;RHBDL;RRP

## 产品验证



Western blot analysis of RHBDL1 expressed in Mouse brain,Rat brain,Mouse kidney using RHBDL1 Rabbit pAb at 1:1000. Secondary antibody: HRP Goat Anti-Rabbit IgG (H+L) at 1:5000. Lysates/proteins: 30ug per lane. Blocking buffer: 5% non-fat dry milk in TBST. Detection: ECL Enhanced Kit. Exposure time: 120s.

## 实验步骤

访问官网浏览详情: [www.ablybio.cn](http://www.ablybio.cn)