

ABI1 Rabbit pAb

货号: **AYP10852**

产品信息

反应	Human,Mouse,Rat
宿主	Rabbit
克隆性	Polyclonal
预测反应	
应用	WB IHC
推荐浓度	WB: 1:500 - 1:1000 IHC: 1:50 - 1:200
理论分子量	35-55kDa
实测分子量	55-65KDa
形式	Liquid
保存条件	Store at -20°C. Avoid freeze / thaw cycles. Buffer: PBS with 0.01% thiomersal,50% glycerol,pH7.3.
偶联物	Unconjugated
阳性对照	Neuro-2a,Rat brain
细胞定位	Cell junction,Cell projection,Cytoplasm,Nucleus,cytoskeleton,filopodium,growth cone,lamellipodium,postsynaptic cell membrane,postsynaptic density,synapse
纯化	Affinity purification

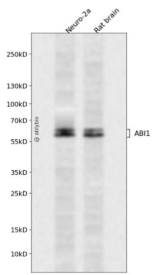
抗原信息

抗原信息	Recombinant fusion protein containing a sequence corresponding to amino acids 180-230 of human ABI1 (NP_001012770).
序列	PMSGRGTLGRNTPYKTLPEVKPPTVPNDYMTSPARLGSQHSPPGRTASLNQR

靶点信息

研究背景	This gene encodes a member of the Abelson-interactor family of adaptor proteins. These proteins facilitate signal transduction as components of several multiprotein complexes, and regulate actin polymerization and cytoskeletal remodeling through interactions with Abelson tyrosine kinases. The encoded protein plays a role in macropinocytosis as a component of the WAVE2 complex, and also forms a complex with EP58 and SOS1 that mediates signal transduction from Ras to Rac. This gene may play a role in the progression of several malignancies including melanoma, colon cancer and breast cancer, and a t(10;11) chromosomal translocation involving this gene and the MLL gene has been associated with acute myeloid leukemia. Alternatively spliced transcript variants encoding multiple isoforms have been observed for this gene, and a pseudogene of this gene is located on the long arm of chromosome 14.
基因ID	10006
基因名	ABI1
Swiss	Q8IZP0
别名	ABI1;ABI-1;ABLBP4;E3B1;NAP1BP;SSH3BP;SSH3BP1

产品验证



Western blot analysis of ABI1 expressed in Neuro-2a,Rat brain using ABI1 Rabbit pAb at 1:1000. Secondary antibody: HRP Goat Anti-Rabbit IgG (H+L) at 1:5000. Lysates/proteins: 30ug per lane. Blocking buffer: 5% non-fat dry milk in TBST. Detection: ECL Enhanced Kit. Exposure time: 120s.

实验步骤

访问官网浏览详情: www.ablybio.cn