

EPN2 Rabbit pAb

货号: **AYP10849**

产品信息

反应	Human
宿主	Rabbit
克隆性	Polyclonal
预测反应	
应用	WB IHC
推荐浓度	WB: 1:500 - 1:2000 IHC: 1:50 - 1:200
理论分子量	36kDa/57kDa/62kDa/68kDa
实测分子量	70kDa
形式	Liquid
保存条件	Store at -20°C. Avoid freeze / thaw cycles. Buffer: PBS with 0.01% thiomersal,50% glycerol,pH7.3.
偶联物	Unconjugated
阳性对照	U-87MG,LO2,HeLa
细胞定位	Cytoplasm,Cytoplasmic vesicle,clathrin-coated vesicle
纯化	Affinity purification

抗原信息

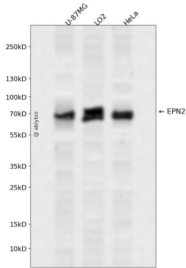
抗原信息	Recombinant fusion protein containing a sequence corresponding to amino acids 120-300 of human EPN2 (NP_683723.2).
序列	GINVREKSKQLVALLKDEERLKAERAQALKTKERMAQVATGMGSNQITFGRGSSQPNLSTSHSEQEYKGAGGSPASYHG STSPRVSSLEQARPQTSGEELQLQLALAMSREVAEQEERLRRGDDLRLQMALEESRRDVTVKIPKKKEHGSLPQQTTLLD LMDALPSSGPAQAEPWGPS

靶点信息

研究背景	This gene encodes a protein which interacts with clathrin and adaptor-related protein complex 2, alpha 1 subunit. The protein is found in a brain-derived clathrin-coated vesicle fraction and localizes to the peri-Golgi region and the cell periphery. The protein is thought to be involved in clathrin-mediated endocytosis. Alternate splicing of this gene results in multiple transcript variants encoding different isoforms.
------	--

基因ID	22905
基因名	EPN2
Swiss	O95208
别名	EPN2;EHB21;epsin-2

产品验证



Western blot analysis of EPN2 expressed in U-87MG, LO2, HeLa using EPN2 Rabbit pAb at 1:1000. Secondary antibody: HRP Goat Anti-Rabbit IgG (H+L) at 1:5000. Lysates/proteins: 30ug per lane. Blocking buffer: 5% non-fat dry milk in TBST. Detection: ECL Enhanced Kit. Exposure time: 120s.

实验步骤

访问官网浏览详情: www.ablybio.cn