

CTRC Rabbit pAb

货号: **AYP10847**

产品信息

| | |
|-------|--|
| 反应 | Mouse |
| 宿主 | Rabbit |
| 克隆性 | Polyclonal |
| 预测反应 | |
| 应用 | WB |
| 推荐浓度 | WB: 1:500 - 1:2000 |
| 理论分子量 | 29kDa |
| 实测分子量 | 30kDa |
| 形式 | Liquid |
| 保存条件 | Store at -20°C. Avoid freeze / thaw cycles. Buffer: PBS with 0.01% thiomersal, 50% glycerol, pH7.3. |
| 偶联物 | Unconjugated |
| 阳性对照 | Mouse pancreas |
| 细胞定位 | |
| 纯化 | Affinity purification |

抗原信息

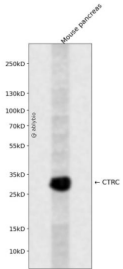
| | |
|------|---|
| 抗原信息 | Recombinant fusion protein containing a sequence corresponding to amino acids 30-150 of human CTRC (NP_009203.2). |
| 序列 | VVGGEDARPHSWPWQISLQYLKNDTWRHTCGGTLIASNFVLTAAHCISNTRTYRVAVGKNNLEVEDEEGSLFVGVDTIHV HKRWNALLLRNDIALIKLAEHVELSDTIQVAQLPEKDSLLP |

靶点信息

| | |
|------|---|
| 研究背景 | This gene encodes a member of the peptidase S1 family. The encoded protein is a serum calcium-decreasing factor that has chymotrypsin-like protease activity. Alternatively spliced transcript variants have been observed, but their full-length nature has not been determined. |
| 基因ID | 11330 |

| | |
|-------|----------------|
| 基因名 | CTRC |
| Swiss | Q99895 |
| 别名 | CTRC;CLCR;ELA4 |

产品验证



Western blot analysis of CTRC expressed in Mouse pancreas using CTRC Rabbit pAb at 1:1000. Secondary antibody: HRP Goat Anti-Rabbit IgG (H+L) at 1:5000. Lysates/proteins: 30ug per lane. Blocking buffer: 5% non-fat dry milk in TBST. Detection: ECL Enhanced Kit. Exposure time: 120s.

实验步骤

访问官网浏览详情: www.ablybio.cn