

XPO7 Rabbit pAb

货号: **AYP10846**

产品信息

反应	Human,Mouse,Rat
宿主	Rabbit
克隆性	Polyclonal
预测反应	
应用	WB
推荐浓度	WB: 1:500 - 1:2000
理论分子量	123kDa
实测分子量	124kDa
形式	Liquid
保存条件	Store at -20°C. Avoid freeze / thaw cycles. Buffer: PBS with 0.01% thiomersal,50% glycerol,pH7.3.
偶联物	Unconjugated
阳性对照	LO2,HT-29,Mouse testis,Mouse spleen,Mouse liver,Rat testis
细胞定位	Cytoplasm,Nucleus,nuclear pore complex
纯化	Affinity purification

抗原信息

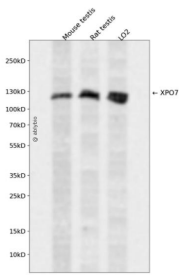
抗原信息	A synthetic peptide corresponding to a sequence within amino acids 1000 to the C-terminus of human XP O7 (NP_055839.3).
序列	SMSRPLLGLILLNEKYFSDLRNSIVNSQPPEKQAMHLCFENLMEGIERNLLTKNRDRFTQNLSAFRREVNDMKNSTYGV NSNDMMMS

靶点信息

研究背景	The transport of protein and large RNAs through the nuclear pore complexes (NPC) is an energy-dependent and regulated process. The import of proteins with a nuclear localization signal (NLS) is accomplished by recognition of one or more clusters of basic amino acids by the importin-alpha/beta complex; see MIM 600685 and MIM 602738. The small GTPase RAN (MIM 601179) plays a key role in NLS-dependent protein import. RAN-binding protein-16 is a member of the importin-beta superfamily of nuclear transport receptors.
------	---

基因ID	23039
基因名	XPO7
Swiss	Q9UIA9
别名	XPO7;EXP7;RANBP16

产品验证



Western blot analysis of XPO7 expressed in Mouse testis,Rat testis,LO2 using XPO7 Rabbit pAb at 1:1000. Secondary antibody: HRP Goat Anti-Rabbit IgG (H+L) at 1:5000. Lysates/proteins: 30ug per lane. Blocking buffer: 5% non-fat dry milk in TBST. Detection: ECL Enhanced Kit. Exposure time: 120s.

实验步骤

访问官网浏览详情: www.ablybio.cn