

# ARL15 Rabbit pAb

货号: **AYP10835**

## 产品信息

反应	Mouse
宿主	Rabbit
克隆性	Polyclonal
预测反应	
应用	WB
推荐浓度	<b>WB:</b> 1:500 - 1:2000
理论分子量	22kDa
实测分子量	23kDa
形式	Liquid
保存条件	Store at -20°C. Avoid freeze / thaw cycles. Buffer: PBS with 0.01% thiomersal,50% glycerol,pH7.3.
偶联物	Unconjugated
阳性对照	Mouse pancreas
细胞定位	extracellular exosome
纯化	Affinity purification

## 抗原信息

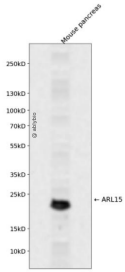
抗原信息	Recombinant fusion protein containing a sequence corresponding to amino acids 1-204 of human ARL15 (NP_061960.1).
序列	MSDLRITEAFLYMDYLCFRALCCKGPPPARPEYDLVCIGLTGSGKTSLLSKLCSESPDNVSTTGFSIKAVPFQNAILNVKELGGADNIRKYWSRYQGSQGVIFVLDASSEDDLEAARNELHSALQHPQLCTLPFLILANHQDKPAARSVQEIKKYFELEPLARGKRWILQPCLDDMDALKDSFSQLINLLEEKDHEAVRM

## 靶点信息

研究背景	Predicted to enable GTP binding activity and GTPase activity. Located in extracellular exosome.
基因ID	54622
基因名	ARL15

<b>Swiss</b>	Q9NXU5
别名	ARL15;ARFRP2

## 产品验证



Western blot analysis of ARL15 expressed in Mouse pancreas using ARL15 Rabbit pAb at 1:1000. Secondary antibody: HRP Goat Anti-Rabbit IgG (H+L) at 1:5000. Lysates/proteins: 30ug per lane. Blocking buffer: 5% non-fat dry milk in TBST. Detection: ECL Enhanced Kit. Exposure time: 120s.

## 实验步骤

访问官网浏览详情: [www.ablybio.cn](http://www.ablybio.cn)