

RHCG Rabbit pAb

货号: **AYP10833**

产品信息

反应	Human,Mouse,Rat
宿主	Rabbit
克隆性	Polyclonal
预测反应	
应用	WB
推荐浓度	WB: 1:500 - 1:2000
理论分子量	53kDa
实测分子量	53kDa
形式	Liquid
保存条件	Store at -20°C. Avoid freeze / thaw cycles. Buffer: PBS with 0.01% thiomersal,50% glycerol,pH7.3.
偶联物	Unconjugated
阳性对照	BxPC-3,DU145,293T,Mouse kidney,Rat kidney
细胞定位	Apical cell membrane,Multi-pass membrane protein
纯化	Affinity purification

抗原信息

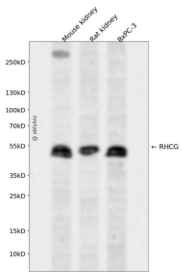
抗原信息	Recombinant fusion protein containing a sequence corresponding to amino acids 240-479 of human RHC G (NP_057405.1).
序列	SYHGDSQHRAAINTYCSLAACVLTSVAISSALHKKGKLDMVHIQNATLAGGVAVGTAAEMMLMPYGALIIGFVCGIISTLGF VYLTPFLESRLHIQDTCGINNLHGIPGIIGGIVGAVTAASASLEVYKGLVHSFDFQGFNGDWTARTQGKFQIYGLLVTLA MALMGGIIVGLLRLPFWGPSPDENCDFEDAVYWEMPEGNSTVYIPEDPTFKPSGSPVSPVPMVSPLPMASVPLVP

靶点信息

研究背景	Functions as an electroneutral and bidirectional ammonium transporter. May regulate transepithelial ammonia secretion.
基因ID	51458

基因名	RHCG
Swiss	Q9UBD6
别名	RHCG;C15orf6;PDRC2;RHGK;SLC42A3

产品验证



Western blot analysis of RHCG expressed in Mouse kidney,Rat kidney,BxPC-3 using RHCG Rabbit pAb at 1:1000. Secondary antibody: HRP Goat Anti-Rabbit IgG (H+L) at 1:5000. Lysates/proteins: 30ug per lane. Blocking buffer: 5% non-fat dry milk in TBST. Detection: ECL Enhanced Kit. Exposure time: 120s.

实验步骤

访问官网浏览详情: www.ablybio.cn