

CHID1 Rabbit pAb

货号: **AYP10828**

产品信息

反应	Mouse
宿主	Rabbit
克隆性	Polyclonal
预测反应	
应用	WB
推荐浓度	WB: 1:500 - 1:2000
理论分子量	41kDa/44kDa/47kDa
实测分子量	55kDa
形式	Liquid
保存条件	Store at -20°C. Avoid freeze / thaw cycles. Buffer: PBS with 0.01% thiomersal, 50% glycerol, pH7.3.
偶联物	Unconjugated
阳性对照	Mouse pancreas
细胞定位	Lysosome, Secreted
纯化	Affinity purification

抗原信息

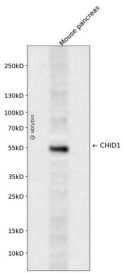
抗原信息	Recombinant fusion protein containing a sequence corresponding to amino acids 1-393 of human CHID1 (NP_076436.3).
序列	MRTLFNLLWLALACSPVHTTLSKSDAKKAASKTLEKSQFSDKPVQDRGLVVDLKAESVLEHRSYCSAKARDRHAFAGD VLGYVTPWNSHGVDVTKVFGSKFTQISPVWLQLKRRGREMFVETGLHDVDQGWMAVRKHKAGLHIVPRLLFEDWTYD DFRNVLDSEDEIEELSKTVVQVAKNQHFDFVVEVWNQLLSQKRVGLIHMLTHLAEALHQARLLALLVIPAITPGTDQLG MFTHKEFEQLAPVLDGFSMLTYDYSTAHQPGPNAPLSWVRACVQVLDPKSKWRSKILLGLNFYGM DYATSKDAREPVVG ARYIQLKDHPRPMVWDSQASEHFFEYKKSRSRSHVVFYPTLKS LQVRLELARELGVGVSIWELGQGLDYFYDLL

靶点信息

研究背景	Saccharide- and LPS-binding protein with possible roles in pathogen sensing and endotoxin neutralization. Ligand-binding specificity relates to the length of the oligosaccharides, with preference for chitotetraose (in vitro).
------	---

基因ID	66005
基因名	CHID1
Swiss	Q9BWS9
别名	CHID1;GL008;SI-CLP;SICLP

产品验证



Western blot analysis of CHID1 expressed in Mouse pancreas using CHID1 Rabbit pAb at 1:1000. Secondary antibody: HRP Goat Anti-Rabbit IgG (H+L) at 1:5000. Lysates/proteins: 30ug per lane. Blocking buffer: 5 % non-fat dry milk in TBST. Detection: ECL Enhanced Kit. Exposure time: 120s.

实验步骤

访问官网浏览详情: www.ablybio.cn