

— ABLYBIO, Help Your Research



# CHPT1 Rabbit pAb

货号: **AYP10825**

## 产品信息

反应	Human
宿主	Rabbit
克隆性	Polyclonal
预测反应	
应用	WB
推荐浓度	<b>WB:</b> 1:500 - 1:2000
理论分子量	24kDa/45kDa
实测分子量	50kDa
形式	Liquid
保存条件	Store at -20°C. Avoid freeze / thaw cycles. Buffer: PBS with 0.01% thiomersal, 50% glycerol, pH7.3.
偶联物	Unconjugated
阳性对照	DU145
细胞定位	Golgi apparatus membrane, Multi-pass membrane protein
纯化	Affinity purification

## 抗原信息

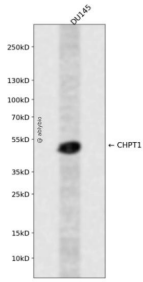
抗原信息	A synthetic peptide corresponding to a sequence within amino acids 1-100 of human CHPT1 (NP_064629.2).
------	--

## 靶点信息

研究背景	Catalyzes phosphatidylcholine biosynthesis from CDP-choline. It thereby plays a central role in the formation and maintenance of vesicular membranes.
------	---

基因ID	56994
基因名	CHPT1
Swiss	Q8WUD6 ( <a href="https://www.uniprot.org/uniprotkb/Q8WUD6/entry">https://www.uniprot.org/uniprotkb/Q8WUD6/entry</a> )
别名	CHPT1,CPT,CPT1,CHPT1 Rabbit pAb,AAPT1-like protein,Diacylglycerol cholinephosphotransferase 1

## 产品验证



Western blot analysis of CHPT1 expressed in DU145 using CHPT1 Rabbit pAb at 1:1000. Secondary antibody: HRP Goat Anti-Rabbit IgG (H+L) at 1:5000. Lysates/proteins: 30ug per lane. Blocking buffer: 5% non-fat dry milk in TBST. Detection: ECL Enhanced Kit. Exposure time: 120s.

## 实验步骤

访问官网浏览详情: [www.ablybio.cn](http://www.ablybio.cn) (<https://www.ablybio.cn/www.ablybio.cn>)