

SLC34A3 Rabbit pAb

货号: **AYP10813**

产品信息

反应	Human,Mouse,Rat
宿主	Rabbit
克隆性	Polyclonal
预测反应	
应用	WB
推荐浓度	WB: 1:500 - 1:2000
理论分子量	63kDa
实测分子量	63kDa
形式	Liquid
保存条件	Store at -20°C. Avoid freeze / thaw cycles. Buffer: PBS with 0.01% thiomersal,50% glycerol,pH7.3.
偶联物	Unconjugated
阳性对照	Mouse brain,Mouse kidney,Rat brain
细胞定位	Membrane,Multi-pass membrane protein
纯化	Affinity purification

抗原信息

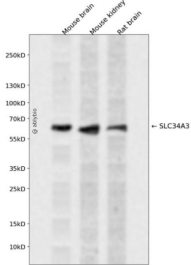
抗原信息	Recombinant fusion protein containing a sequence corresponding to amino acids 210-320 of human SLC34A3 (NP_543153.1).
序列	ESATALLERLSELALGAASLTTPRAQAPDILKVLTKPLTHLIVQLDSDMIMSSATGNATNSSLIKHWC GTTGQPTQENSSCGA FGPCTEKNSTAPADRLPCRHLFAGTE LTD

靶点信息

研究背景	This gene encodes a member of SLC34A transporter family of proteins, and is expressed primarily in the kidney. It is involved in transporting phosphate into cells via sodium cotransport in the renal brush border membrane, and contributes to the maintenance of inorganic phosphate concentration in the kidney. Mutations in this gene are associated with hereditary hypophosphatemic rickets with hypercalciuria. Alternatively spliced transcript variants varying in the 5' UTR have been found for this gene.
基因ID	142680

基因名	SLC34A3
Swiss	Q8N130
别名	SLC34A3;HHRH;NPTIIc

产品验证



Western blot analysis of SLC34A3 expressed in Mouse brain, Mouse kidney, Rat brain using SLC34A3 Rabbit pAb at 1:1000. Secondary antibody: HRP Goat Anti-Rabbit IgG (H+L) at 1:5000. Lysates/proteins: 30ug per lane. Blocking buffer: 5% non-fat dry milk in TBST. Detection: ECL Enhanced Kit. Exposure time: 120s.

实验步骤

访问官网浏览详情: www.ablybio.cn