

— ABLYBIO, Help Your Research



# GPR151 Rabbit pAb

货号: **AYP10810**

## 产品信息

反应	Human,Mouse,Rat
宿主	Rabbit
克隆性	Polyclonal
预测反应	
应用	WB
推荐浓度	<b>WB:</b> 1:500 - 1:1000
理论分子量	46kDa
实测分子量	47KDa
形式	Liquid
保存条件	Store at -20°C. Avoid freeze / thaw cycles. Buffer: PBS with 0.01% thiomersal,50% glycerol,pH7.3.
偶联物	Unconjugated
阳性对照	Mouse brain
细胞定位	Cell membrane,Multi-pass membrane protein
纯化	Affinity purification

## 抗原信息

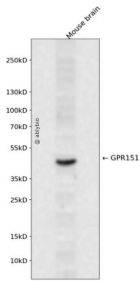
抗原信息	Recombinant fusion protein containing a sequence corresponding to amino acids 310-419 of human GPR151 (NP_919227.2).
------	--

## 靶点信息

研究背景	The protein encoded by this gene is similar to the galanin receptor subfamily of G protein-coupled receptors. The encoded protein is found predominantly in the central nervous system.
------	---

基因ID	134391
基因名	GPR151
Swiss	Q8TDV0 ( <a href="https://www.uniprot.org/uniprotkb/Q8TDV0/entry">https://www.uniprot.org/uniprotkb/Q8TDV0/entry</a> )
别名	GPR151,GALR4,GALRL,GPCR,GPCR-2037,PGR7,GPR151 Rabbit pAb,G-protein coupled receptor PGR7,Galanin receptor 4,Galanin-receptor-like protein

## 产品验证



Western blot analysis of GPR151 expressed in Mouse brain using GPR151 Rabbit pAb at 1:1000. Secondary antibody: HRP Goat Anti-Rabbit IgG (H+L) at 1:5000. Lysates/proteins: 30ug per lane. Blocking buffer: 5% non-fat dry milk in TBST. Detection: ECL Enhanced Kit. Exposure time: 120s.

## 实验步骤

访问官网浏览详情: [www.ablybio.cn](http://www.ablybio.cn) (<https://www.ablybio.cn/www.ablybio.cn>)