

CCDC110 Rabbit pAb

货号: **AYP10798**

产品信息

反应	Mouse,Rat
宿主	Rabbit
克隆性	Polyclonal
预测反应	
应用	WB
推荐浓度	WB: 1:500 - 1:2000
理论分子量	92kDa/96kDa
实测分子量	97kDa
形式	Liquid
保存条件	Store at -20°C. Avoid freeze / thaw cycles. Buffer: PBS with 0.01% thiomersal,50% glycerol,pH7.3.
偶联物	Unconjugated
阳性对照	Mouse heart
细胞定位	Nucleus
纯化	Affinity purification

抗原信息

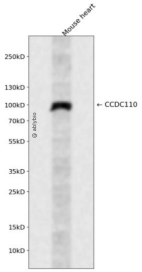
抗原信息	Recombinant fusion protein containing a sequence corresponding to amino acids 1-300 of human CCDC110 (NP_689988.1).
序列	MSPEKQHREDEVDVSVLLSASKILNSSEGKESGSDTEYGCIAESENQIQPSALKVLQQLESFQALRMQTLQNVSMV QSEISEILNKSIIEVENPQFSSEKNLVFGTRIEKDLPTENQEENLSMEKSHHFEDSKLHSVVEEKLSGDSVNSLPQSVNVPSQ IHSEDTLTLRTSTDNLSSNIIHPSSENSDILKNYNNFYRFLPTAPPNVMSQADTVILDKSKITVPFLKHGFCENLDDICHSIKQM KEELQKSHDGEVALTNELQTLQTPDPVHRNGKYDMSPHQQKMNFIKEENLD

靶点信息

研究背景	Predicted to be located in nucleus. Predicted to be active in cytoskeleton.
基因ID	256309
基因名	CCDC110

Swiss	Q8TBZ0
别名	CCDC110;CT52;KM-HN-1;KMHN1

产品验证



Western blot analysis of CCDC110 expressed in Mouse heart using CCDC110 Rabbit pAb at 1:1000. Secondary antibody: HRP Goat Anti-Rabbit IgG (H+L) at 1:5000. Lysates/proteins: 30ug per lane. Blocking buffer: 5% non-fat dry milk in TBST. Detection: ECL Enhanced Kit. Exposure time: 120s.

实验步骤

访问官网浏览详情: www.ablybio.cn