

— ABLYBIO, Help Your Research



CCR6 Rabbit pAb

货号: **AYP10791**

产品信息

反应	Human
宿主	Rabbit
克隆性	Polyclonal
预测反应	
应用	WB
推荐浓度	WB: 1:500 - 1:2000
理论分子量	42kDa
实测分子量	52kDa
形式	Liquid
保存条件	Store at -20°C. Avoid freeze / thaw cycles. Buffer: PBS with 0.01% thiomersal, 50% glycerol, pH7.3.
偶联物	Unconjugated
阳性对照	LO2
细胞定位	cell surface, external side of plasma membrane, plasma membrane, sperm flagellum, sperm plasma membrane
纯化	Affinity purification

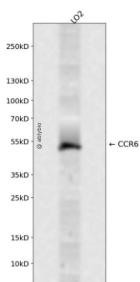
抗原信息

抗原信息	A synthetic peptide corresponding to a sequence within amino acids 300 to the C-terminus of human CCR6 (NP_004358.2).
------	---

靶点信息

研究背景	This gene encodes a member of the beta chemokine receptor family, which is predicted to be a seven transmembrane protein similar to G protein-coupled receptors. The gene is preferentially expressed by immature dendritic cells and memory T cells. The ligand of this receptor is macrophage inflammatory protein 3 alpha (MIP-3 alpha). This receptor has been shown to be important for B-lineage maturation and antigen-driven B-cell differentiation, and it may regulate the migration and recruitment of dendritic and T cells during inflammatory and immunological responses. Alternatively spliced transcript variants that encode the same protein have been described for this gene.
基因ID	1235
基因名	CCR6
Swiss	P51684 (https://www.uniprot.org/uniprotkb/P51684/entry)
别名	CCR6,BN-1,C-C CKR-6,CC-CKR-6,CCR-6,CD196,CKR-L3,CKRL3,CMKBR6,DCCR2,DRY6,GPR29,GPRCY4,STRL22,CCR6 Rabbit pAb,Chemokine receptor-like 3,G-protein coupled receptor 29,GPR-CY4,LARC receptor

产品验证



Western blot analysis of CCR6 expressed in LO2 using CCR6 Rabbit pAb at 1:1000. Secondary antibody: HRP Goat Anti-Rabbit IgG (H+L) at 1:5000. Lysates/proteins: 30ug per lane. Blocking buffer: 5% non-fat dry milk in TBST. Detection: ECL Enhanced Kit. Exposure time: 120s.

实验步骤

访问官网浏览详情: www.ablybio.cn (<https://www.ablybio.cn/>www.ablybio.cn)