

GRM4 Rabbit pAb

货号: **AYP10773**

产品信息

反应	Mouse,Rat
宿主	Rabbit
克隆性	Polyclonal
预测反应	
应用	WB
推荐浓度	WB: 1:500 - 1:2000
理论分子量	83kDa/86kDa/87kDa/88kDa/101kDa
实测分子量	115kDa
形式	Liquid
保存条件	Store at -20°C. Avoid freeze / thaw cycles. Buffer: PBS with 0.02% sodium azide,50% glycerol,pH7.3.
偶联物	Unconjugated
阳性对照	Mouse spinal cord,Rat brain
细胞定位	Cell membrane,Multi-pass membrane protein
纯化	Affinity purification

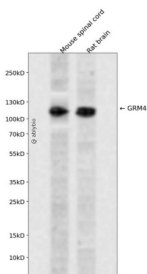
抗原信息

抗原信息	Recombinant fusion protein containing a sequence corresponding to amino acids 33-290 of human GRM4 (NP_000832.1).
序列	KPKGHPHMNSIRIDGDTLGGFLFPVHGRGSEGKPCGELKKEKGIHRLEAMLFALDRINNDPDLNPNITLGARILDTCRDTH ALEQSLTFVQALIEKDGTEVRCGSGGPPPIITKPERVVGIVIGASGSSVSIMVANILRLFQIPQISYASTAPDLSDNSRYDFFSRV VPSDTYQAQAMVDIVRALKWNYVSTVASEGSYGESGVEAFIQSREDDGGVCAQSVKIPREPKAGEFDKIIRRLLETSNARA VIIFANEDDI

靶点信息

研究背景	L-glutamate is the major excitatory neurotransmitter in the central nervous system and activates both ionotropic and metabotropic glutamate receptors. Glutamatergic neurotransmission is involved in most aspects of normal brain function and can be perturbed in many neuropathologic conditions. The metabotropic glutamate receptors are a family of G protein-coupled receptors, that have been divided into 3 groups on the basis of sequence homology, putative signal transduction mechanisms, and pharmacologic properties. Group I includes GRM1 and GRM5 and these receptors have been shown to activate phospholipase C. Group II includes GRM2 and GRM3 while Group III includes GRM4, GRM6, GRM7 and GRM8. Group II and III receptors are linked to the inhibition of the cyclic AMP cascade but differ in their agonist selectivities. Several transcript variants encoding different isoforms have been found for this gene.
基因ID	2914
基因名	GRM4
Swiss	Q14833
别名	GRM4;GPRC1D;MGLUR4;mGlu4

产品验证



Western blot analysis of GRM4 expressed in Mouse spinal cord, Rat brain using GRM4 Rabbit pAb at 1:1000. Secondary antibody: HRP Goat Anti-Rabbit IgG (H+L) at 1:5000. Lysates/proteins: 30ug per lane. Blocking buffer: 5% non-fat dry milk in TBST. Detection: ECL Enhanced Kit. Exposure time: 120s.

实验步骤

访问官网浏览详情: www.ablybio.cn