

SS18L1 Rabbit pAb

货号: **AYP10769**

产品信息

反应	Human,Mouse,Rat
宿主	Rabbit
克隆性	Polyclonal
预测反应	
应用	WB
推荐浓度	WB: 1:500 - 1:2000
理论分子量	29kDa/33kDa/40kDa/42kDa/43kDa
实测分子量	55kDa
形式	Liquid
保存条件	Store at -20°C. Avoid freeze / thaw cycles. Buffer: PBS with 0.02% sodium azide,50% glycerol,pH7.3.
偶联物	Unconjugated
阳性对照	U-87MG,HT-29,Raji,Mouse brain,Mouse liver,Rat brain,Rat liver
细胞定位	Chromosome,Nucleus,centromere,kinetochore
纯化	Affinity purification

抗原信息

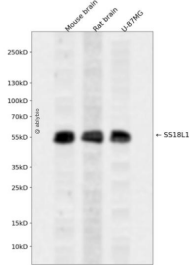
抗原信息	Recombinant fusion protein containing a sequence corresponding to amino acids 90-270 of human SS18L1 (NP_945173.1).
序列	LTQSGSSQGLHSQGLSDAISTGLPPSSLLQGQIGNGSPSHVSMQQTAPNTLPTTSMISGPGYSHAGPASQGVPMQGGQTIGNYVSRNTNINMQSNPVSMMQQAATSHYSSAQGGSQHYQGQSSIAMMGQGSQGSMMGQRPMAPYRPSQQGSSQQYLGQEEYYGEQYSHSQGAAEPMGQQ

靶点信息

研究背景	This gene encodes a calcium-responsive transactivator which is an essential subunit of a neuron-specific chromatin-remodeling complex. The structure of this gene is similar to that of the SS18 gene. Mutations in this gene are involved in amyotrophic lateral sclerosis (ALS). Alternatively spliced transcript variants have been found for this gene.
基因ID	26039

基因名	SS18L1
Swiss	O75177
别名	SS18L1;CREST;LP2261

产品验证



Western blot analysis of SS18L1 expressed in Mouse brain,Rat brain,U-87MG using SS18L1 Rabbit pAb at 1:1000. Secondary antibody: HRP Goat Anti-Rabbit IgG (H+L) at 1:5000. Lysates/proteins: 30ug per lane. Blocking buffer: 5% non-fat dry milk in TBST. Detection: ECL Enhanced Kit. Exposure time: 120s.

实验步骤

访问官网浏览详情: www.ablybio.cn