

# OXA1L Rabbit pAb

货号: **AYP10752**

## 产品信息

反应	Human,Mouse,Rat
宿主	Rabbit
克隆性	Polyclonal
预测反应	
应用	WB
推荐浓度	<b>WB:</b> 1:500 - 1:2000
理论分子量	28kDa/46kDa/48kDa
实测分子量	42kDa
形式	Liquid
保存条件	Store at -20°C. Avoid freeze / thaw cycles. Buffer: PBS with 0.02% sodium azide,50% glycerol,pH7.3.
偶联物	Unconjugated
阳性对照	BT-474,MCF7,HepG2,A-549,293T,Mouse kidney,Mouse liver,Mouse heart
细胞定位	Mitochondrion inner membrane,Multi-pass membrane protein
纯化	Affinity purification

## 抗原信息

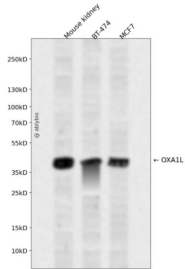
抗原信息	Recombinant fusion protein containing a sequence corresponding to amino acids 396-495 of human OXA1L (NP_005006.3).
序列	PAVRTVLKIPQRVVHDLKLPREGFLESFKKGWKNAMTRQLRERERQMRNQLELAARGPLRQTFTHNPLLQPGKDNPP NIPSSSSKPKSKYPWHDTLG

## 靶点信息

研究背景	This gene encodes an evolutionarily conserved protein that is localized to the inner mitochondrial membrane. The encoded protein is essential for the translocation of the N-terminal tail of subunit 2 of cytochrome c oxidase, and is involved in the assembly of the cytochrome c oxidase and ATPase complexes of the mitochondrial respiratory chain.
基因ID	5018

基因名	OXA1L
Swiss	Q15070
别名	OXA1L;OXA1

## 产品验证



Western blot analysis of OXA1L expressed in Mouse kidney,BT-474,MCF7 using OXA1L Rabbit pAb at 1:1 000. Secondary antibody: HRP Goat Anti-Rabbit IgG (H+L) at 1:5000. Lysates/proteins: 30ug per lane. B locking buffer: 5% non-fat dry milk in TBST. Detection: ECL Enhanced Kit. Exposure time: 120s.

## 实验步骤

访问官网浏览详情: [www.ablybio.cn](http://www.ablybio.cn)