

CEP290 Rabbit pAb

货号: **AYP10748**

产品信息

反应	Human
宿主	Rabbit
克隆性	Polyclonal
预测反应	
应用	WB
推荐浓度	WB: 1:500 - 1:2000
理论分子量	180kDa/290kDa
实测分子量	290kDa
形式	Liquid
保存条件	Store at -20°C. Avoid freeze / thaw cycles. Buffer: PBS with 0.01% thiomersal, 50% glycerol, pH7.3.
偶联物	Unconjugated
阳性对照	U-87MG, DU145
细胞定位	Cell projection, Cytoplasm, Nucleus, centriolar satellite, centriole, centrosome, cilium, cilium basal body, cytoskeleton, microtubule organizing center
纯化	Affinity purification

抗原信息

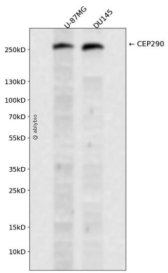
抗原信息	Recombinant fusion protein containing a sequence corresponding to amino acids 950-1050 of human CEP 290 (NP_079390.3).
序列	QKVVDNSVSLSELELANKQYNELTAKYRDILQKDNMLVQRTSNLEHLECECENISLKEQVESINKELEITKEKLHTIEQAWEQETKLGNESSMDKAKKSITNS

靶点信息

研究背景	This gene encodes a protein with 13 putative coiled-coil domains, a region with homology to SMC chromosome segregation ATPases, six KID motifs, three tropomyosin homology domains and an ATP/GTP binding site motif A. The protein is localized to the centrosome and cilia and has sites for N-glycosylation, tyrosine sulfation, phosphorylation, N-myristoylation, and amidation. Mutations in this gene have been associated with Joubert syndrome and nephronophthisis and the presence of antibodies against this protein is associated with several forms of cancer.
------	--

基因ID	80184
基因名	CEP290
Swiss	O15078
别名	CEP290;3H11Ag;BBS14;CT87;JBTS5;LCA10;MKS4;NPHP6;POC3;SLSN6;rd16

产品验证



Western blot analysis of CEP290 expressed in U-87MG,DU145 using CEP290 Rabbit pAb at 1:1000. Secondary antibody: HRP Goat Anti-Rabbit IgG (H+L) at 1:5000. Lysates/proteins: 30ug per lane. Blocking buffer: 5% non-fat dry milk in TBST. Detection: ECL Enhanced Kit. Exposure time: 120s.

实验步骤

访问官网浏览详情: www.ablybio.cn