

# KIF14 Rabbit pAb

货号: **AYP10741**

## 产品信息

|       |  |
|-------|--|
| 反应    | Human,Mouse,Rat  |
| 宿主    | Rabbit   |
| 克隆性   | Polyclonal   |
| 预测反应  | <b>WB:</b> Homo sapiens  |
| 应用    | <a href="#">WB</a> <a href="#">IHC</a> <a href="#">IF/ICC</a>  |
| 推荐浓度  | <b>WB:</b> 1:1000 - 1:2000<br><b>IHC:</b> 1:50 - 1:200<br><b>IF/ICC:</b> 1:50 - 1:200                  |
| 理论分子量 | 186kDa   |
| 实测分子量 | 190kDa   |
| 形式    | Liquid   |
| 保存条件  | Store at -20°C. Avoid freeze / thaw cycles.<br>Buffer: PBS with 0.02% sodium azide,50% glycerol,pH7.3. |
| 偶联物   | Unconjugated   |
| 阳性对照  | HeLa,HL-60   |
| 细胞定位  | Cytoplasm,Midbody,Nucleus,cytoskeleton,spindle   |
| 纯化    | Affinity purification  |

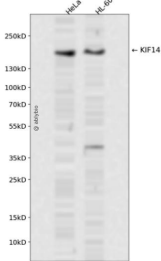
## 抗原信息

|      |  |
|------|--|
| 抗原信息 | Recombinant fusion protein containing a sequence corresponding to amino acids 1399-1648 of human KIF14 (NP_055690.1).  |
| 序列   | LENGNKAASVQEEFMDAVCDGVGLGMKILLDSGLEKAKELQHELFRQCTKNEVTKEMKTNAMGLIRSLLENIFAESKIKSFRQVQEEENFEYQDFKRMVNRAPFLKLEKAIIEIIISALKGCHSDINLLQTCVESIRNLSDFYSDFVSPSTSVGSGYESRVTHIVHQELESLLFCFESEESPDLLKPWETYNQNTKEEHQQSKSSGIDGSKNKGVPKRVYELHGSSPAVSSEECTPSRIQWV |

## 靶点信息

|       |   |
|-------|---|
| 研究背景  | This gene encodes a member of the kinesin-3 superfamily of microtubule motor proteins. These proteins are involved in numerous processes including vesicle transport, chromosome segregation, mitotic spindle formation, and cytokinesis. In human HeLa-S3 and 293T cells, this protein is localized to the cytoplasm during interphase, to the spindle poles and spindle microtubules during mitosis, and to the midbody during cytokinesis. An internal motor domain displays microtubule-dependent ATPase activity, consistent with its function as a microtubule motor protein. Knockdown of this gene results in failed cytokinesis with endoreplication, which results in multinucleated cells. This gene has been identified as a likely oncogene in breast, lung and ovarian cancers, as well as retinoblastomas and gliomas. Alternative splicing results in multiple transcript variants. |
| 基因ID  | 9928  |
| 基因名   | KIF14   |
| Swiss | Q15058  |
| 别名    | KIF14;MKS12   |

## 产品验证



Western blot analysis of KIF14 expressed in HeLa,HL-60 using KIF14 Rabbit pAb at 1:1000. Secondary antibody: HRP Goat Anti-Rabbit IgG (H+L) at 1:5000. Lysates/proteins: 30ug per lane. Blocking buffer: 5% non-fat dry milk in TBST. Detection: ECL Enhanced Kit. Exposure time: 120s.

## 实验步骤

访问官网浏览详情: [www.ablybio.cn](http://www.ablybio.cn)