

KDM8 Rabbit pAb

货号: **AYP10735**

产品信息

反应	Human,Mouse,Rat
宿主	Rabbit
克隆性	Polyclonal
预测反应	WB: Homo sapiens
应用	WB IHC
推荐浓度	WB: 1:500 - 1:2000 IHC: 1:50 - 1:200
理论分子量	24kDa/47kDa/50kDa
实测分子量	55kDa
形式	Liquid
保存条件	Store at -20°C. Avoid freeze / thaw cycles. Buffer: PBS with 0.01% thiomersal,50% glycerol,pH7.3.
偶联物	Unconjugated
阳性对照	LO2,Mouse eye,Mouse liver
细胞定位	Nucleus
纯化	Affinity purification

抗原信息

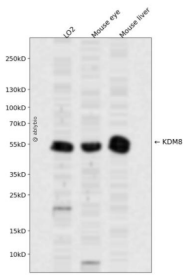
抗原信息	Recombinant fusion protein containing a sequence corresponding to amino acids 147-416 of human KDM 8 (NP_079049.2).
序列	THLPGKRPARGSLPEQPCTKKARADHGLIPDVKLEKTVPRLHRPSLQHFREQFLVPGRPVILKGVADHWPCMQKWSLEYIQ EIAGCRTVPVEVGSRYTDEEWSQTLMTVNEFISKYIVNEPRDVGYLAQHQLFDQIPELKQDISIPDYCSLGDGEEEEITINAW FGPQGTISPLHQDPQONFLVQVMGRKYIRLYSPQESGALYPHDTHLLHNTSQVDVENPDLEKFPKFAKAPFLSCILSPGEIL FIPVKYWHYVRALDLSFSVSFWWS

靶点信息

研究背景	This gene likely encodes a histone lysine demethylase. Studies of a similar protein in mouse indicate a potential role for this protein as a tumor suppressor. Alternatively spliced transcript variants have been described.
------	---

基因ID	79831
基因名	KDM8
Swiss	Q8N371
别名	KDM8;JMJD5

产品验证



Western blot analysis of KDM8 expressed in LO2, Mouse eye, Mouse liver using KDM8 Rabbit pAb at 1:1000. Secondary antibody: HRP Goat Anti-Rabbit IgG (H+L) at 1:5000. Lysates/proteins: 30ug per lane. Blocking buffer: 5% non-fat dry milk in TBST. Detection: ECL Enhanced Kit. Exposure time: 120s.

实验步骤

访问官网浏览详情: www.ablybio.cn