

— ABLYBIO, Help Your Research



KTN1 Rabbit pAb

货号: **AYP10730**

产品信息

反应	Human,Mouse,Rat
宿主	Rabbit
克隆性	Polyclonal
预测反应	WB: Arabidopsis thaliana
应用	WB IHC
推荐浓度	WB: 1:500 - 1:2000 IHC: 1:50 - 1:200
理论分子量	149kDa/150kDa/152kDa/156kDa
实测分子量	178kDa
形式	Liquid
保存条件	Store at -20°C. Avoid freeze / thaw cycles. Buffer: PBS with 0.02% sodium azide,50% glycerol,pH7.3.
偶联物	Unconjugated
阳性对照	K-562,SKOV3,Raji,HeLa,HT-1080,Mouse heart,Rat testis
细胞定位	Endoplasmic reticulum membrane,Single-pass type II membrane protein
纯化	Affinity purification

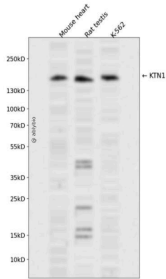
抗原信息

抗原信息	A synthetic peptide corresponding to a sequence within amino acids 1-100 of human KTN1 (NP_00107298 9.1).
------	---

靶点信息

研究背景	This gene encodes an integral membrane protein that is a member of the kinectin protein family. The encoded protein is primarily localized to the endoplasmic reticulum membrane. This protein binds kinesin and may be involved in intracellular organelle motility. This protein also binds translation elongation factor-delta and may be involved in the assembly of the elongation factor-1 complex. Alternate splicing results in multiple transcript variants of this gene.
基因ID	3895
基因名	KTN1
Swiss	Q86UP2 (https://www.uniprot.org/uniprotkb/Q86UP2/entry)
别名	KTN1,CG1,KNT,MU-RMS-40.19,kinectin,KTN1 Rabbit pAb,CG-1 antigen,Kinesin receptor,KIAA0004

产品验证



Western blot analysis of KTN1 expressed in Mouse heart,Rat testis,K-562 using KTN1 Rabbit pAb at 1:1000. Secondary antibody: HRP Goat Anti-Rabbit IgG (H+L) at 1:5000. Lysates/proteins: 30ug per lane. Blocking buffer: 5% non-fat dry milk in TBST. Detection: ECL Enhanced Kit. Exposure time: 120s.

实验步骤

访问官网浏览详情: www.ablybio.cn (<https://www.ablybio.cn/www.ablybio.cn>)