

KIF1C Rabbit pAb

货号: **AYP10722**

产品信息

反应	Human,Mouse,Rat
宿主	Rabbit
克隆性	Polyclonal
预测反应	IF: Mus musculus
应用	WB
推荐浓度	WB: 1:500 - 1:2000
理论分子量	122kDa
实测分子量	165kDa
形式	Liquid
保存条件	Store at -20°C. Avoid freeze / thaw cycles. Buffer: PBS with 0.01% thiomersal,50% glycerol,pH7.3.
偶联物	Unconjugated
阳性对照	HeLa,HepG2,293T,K-562,Mouse brain
细胞定位	Cytoplasm,cytoskeleton
纯化	Affinity purification

抗原信息

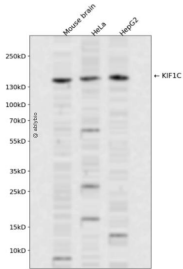
抗原信息	Recombinant fusion protein containing a sequence corresponding to amino acids 810-960 of human KIF1C (NP_006603.2).
序列	EEGGGAGSGGGSEEGARGAEVEDLRAHIDKLTGILQEVKLNSSKDRELQALRDRMLRMERVIPLAQDHEDENEEGGEV PWAPPEGSEAAEEAAPSDRMPSPARPPSPPLSSWERVSRLMEEDPAFRRGRLRWLQKQQLRLQGLQGSGGRRGG

靶点信息

研究背景	The protein encoded by this gene is a member of the kinesin-like protein family. The family members are microtubule-dependent molecular motors that transport organelles within cells and move chromosomes during cell division. Mutations in this gene are a cause of spastic ataxia 2, autosomal recessive.
基因ID	10749

基因名	KIF1C
Swiss	O43896
别名	KIF1C;LTXS1;SATX2;SAX2;SPAX2;SPG58

产品验证



Western blot analysis of KIF1C expressed in Mouse brain, HeLa, HepG2 using KIF1C Rabbit pAb at 1:1000. Secondary antibody: HRP Goat Anti-Rabbit IgG (H+L) at 1:5000. Lysates/proteins: 30ug per lane. Blocking buffer: 5% non-fat dry milk in TBST. Detection: ECL Enhanced Kit. Exposure time: 120s.

实验步骤

访问官网浏览详情: www.ablybio.cn