

— ABLYBIO, Help Your Research



ALDH5A1 Rabbit pAb

货号: **AYP10717**

产品信息

反应	Mouse,Rat
宿主	Rabbit
克隆性	Polyclonal
预测反应	WB: Homo sapiens
应用	WB
推荐浓度	WB: 1:500 - 1:2000
理论分子量	57kDa/58kDa
实测分子量	57kDa
形式	Liquid
保存条件	Store at -20°C. Avoid freeze / thaw cycles. Buffer: PBS with 0.01% thiomersal,50% glycerol,pH7.3.
偶联物	Unconjugated
阳性对照	Rat brain
细胞定位	Mitochondrion
纯化	Affinity purification

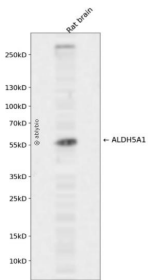
抗原信息

抗原信息	A synthetic peptide corresponding to a sequence within amino acids 400-500 of human ALDH5A1 (NP_001071.1).
------	--

靶点信息

研究背景	This protein belongs to the aldehyde dehydrogenase family of proteins. This gene encodes a mitochondrial NAD(+)-dependent succinic semialdehyde dehydrogenase. A deficiency of this enzyme, known as 4-hydroxybutyricaciduria, is a rare inborn error in the metabolism of the neurotransmitter 4-aminobutyric acid (GABA). In response to the defect, physiologic fluids from patients accumulate GHB, a compound with numerous neuromodulatory properties. Two transcript variants encoding distinct isoforms have been identified for this gene.
基因ID	7915
基因名	ALDH5A1
Swiss	P51649 (https://www.uniprot.org/uniprotkb/P51649/entry)
别名	ALDH5A1,SSADH,SSDH,ALDH5A1 Rabbit pAb,Aldehyde dehydrogenase family 5 member A1,NAD(+)-dependent succinic semialdehyde dehydrogenase

产品验证



Western blot analysis of ALDH5A1 expressed in Rat brain using ALDH5A1 Rabbit pAb at 1:1000. Secondary antibody: HRP Goat Anti-Rabbit IgG (H+L) at 1:5000. Lysates/proteins: 30ug per lane. Blocking buffer: 5% non-fat dry milk in TBST. Detection: ECL Enhanced Kit. Exposure time: 120s.

实验步骤

访问官网浏览详情: www.ablybio.cn (<https://www.ablybio.cn/www.ablybio.cn>)