

SLC28A2 Rabbit pAb

货号: **AYP10716**

产品信息

反应	Human,Mouse,Rat
宿主	Rabbit
克隆性	Polyclonal
预测反应	WB: Chlorocebus aethiops
应用	WB
推荐浓度	WB: 1:500 - 1:2000
理论分子量	71kDa
实测分子量	72kDa
形式	Liquid
保存条件	Store at -20°C. Avoid freeze / thaw cycles. Buffer: PBS with 0.01% thiomersal,50% glycerol,pH7.3.
偶联物	Unconjugated
阳性对照	HepG2,293T,HT-29,BxPC-3,Mouse heart,Mouse spleen,Rat liver,Rat heart
细胞定位	Membrane,Multi-pass membrane protein
纯化	Affinity purification

抗原信息

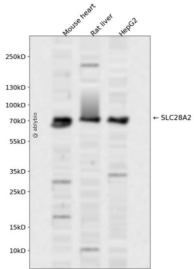
抗原信息	A synthetic peptide corresponding to a sequence within amino acids 350-450 of human SLC28A2 (NP_004203.2).
序列	GAFIAFGVDASSLISASVMAAPCALASSKLAYPEVEESKFKSEEGVKLPRGKERNVLEAASNGAVDAIGLATNVAANLIAFLA VLAFINAALSWLGELVDI

靶点信息

研究背景	Sodium-dependent and purine-selective transporter. Exhibits the transport characteristics of the nucleoside transport system cif or N1 subtype (N1/cif (selective for purine nucleosides and uridine. Plays a critical role in specific uptake and salvage of purine nucleosides in kidney and other tissues.
基因ID	9153

基因名	SLC28A2
Swiss	O43868
别名	SLC28A2;CNT2;HCNT2;HsT17153;SPNT1

产品验证



Western blot analysis of SLC28A2 expressed in Mouse heart,Rat liver,HepG2 using SLC28A2 Rabbit pAb at 1:1000. Secondary antibody: HRP Goat Anti-Rabbit IgG (H+L) at 1:5000. Lysates/proteins: 30ug per lane. Blocking buffer: 5% non-fat dry milk in TBST. Detection: ECL Enhanced Kit. Exposure time: 120 S.

实验步骤

访问官网浏览详情: www.ablybio.cn