

CD62L/L-Selectin Rabbit pAb

货号: **AYP10709**

产品信息

反应	Human,Mouse,Rat
宿主	Rabbit
克隆性	Polyclonal
预测反应	WB: Mus musculus
应用	WB IHC
推荐浓度	WB: 1:500 - 1:1000 IHC: 1:50 - 1:200
理论分子量	42kDa/43kDa
实测分子量	75KDa
形式	Liquid
保存条件	Store at -20°C. Avoid freeze / thaw cycles. Buffer: PBS with 0.01% thiomersal,50% glycerol,pH7.3.
偶联物	Unconjugated
阳性对照	Jurkat,RAW264.7,Mouse spleen,Mouse thymus,Rat thymus
细胞定位	Membrane,Single-pass type I membrane protein
纯化	Affinity purification

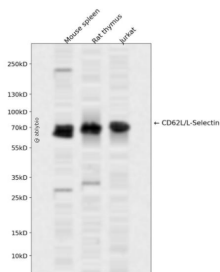
抗原信息

抗原信息	A synthetic peptide corresponding to a sequence within amino acids 1-100 of human CD62L/L-Selectin (NP_000646.2).
序列	MGCRRTREGPSKAMIFPWKCQSTQRDLWNIFKLWGWTMLCCDFLAHHGTDWCWYHYSEKPMNWQRARRFCRDNYTD LVAIQNKAEIEYLEKTLPFSSRSYY

靶点信息

研究背景	This gene encodes a cell surface adhesion molecule that belongs to a family of adhesion/homing receptors. The encoded protein contains a C-type lectin-like domain, a calcium-binding epidermal growth factor-like domain, and two short complement-like repeats. The gene product is required for binding and subsequent rolling of leucocytes on endothelial cells, facilitating their migration into secondary lymphoid organs and inflammation sites. Single-nucleotide polymorphisms in this gene have been associated with various diseases including immunoglobulin A nephropathy. Alternatively spliced transcript variants have been found for this gene.
基因ID	6402
基因名	SELL
Swiss	P14151
别名	SELL;CD62L;LAM1;LECAM1;LEU8;LNHR;LSEL;LYAM1;PLNHR;TQ1

产品验证



Western blot analysis of CD62L/L-Selectin expressed in Mouse spleen, Rat thymus, Jurkat using CD62L/L-Selectin Rabbit pAb at 1:1000. Secondary antibody: HRP Goat Anti-Rabbit IgG (H+L) at 1:5000. Lysates/proteins: 30ug per lane. Blocking buffer: 5% non-fat dry milk in TBST. Detection: ECL Enhanced Kit. Exposure time: 120s.

实验步骤

访问官网浏览详情: www.ablybio.cn