

# ODC1 Rabbit pAb

货号: **AYP10706**

## 产品信息

反应	Human,Mouse,Rat
宿主	Rabbit
克隆性	Polyclonal
预测反应	<b>WB:</b> Homo sapiens
应用	<a href="#">WB</a> <a href="#">IF/ICC</a>
推荐浓度	<b>WB:</b> 1:500 - 1:1000 <b>IF/ICC:</b> 1:50 - 1:200
理论分子量	51kDa
实测分子量	51KDa
形式	Liquid
保存条件	Store at -20°C. Avoid freeze / thaw cycles. Buffer: PBS with 0.02% sodium azide,50% glycerol,pH7.3.
偶联物	Unconjugated
阳性对照	293T,HepG2,Raji,Mouse kidney,Rat kidney
细胞定位	cytoplasm,cytosol
纯化	Affinity purification

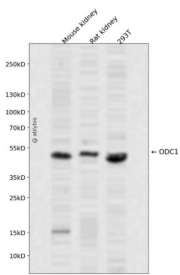
## 抗原信息

抗原信息	Recombinant fusion protein containing a sequence corresponding to amino acids 1-280 of human ODC1 ( NP_002530.1).
序列	MNCFGNEEFDCHFLDEGFTAKDILDQKINEVSSDDKDAFYVADLGDILKKHLRWLWALPRVTPFYAVKCNDSKAIVKTLA ATGTGFDCAKTEIQLVQSLGVPPERIIYANPCKQVSQIKYAANNGVQMMTFDSEVELMKVARAHPKAKLVLRIATDDSKA VCRLSVKFGATLRTSRLLLLERAKELNIDVVGVSFHVSGSCTDPETFVQAISDARCVFDMGAEVGFMSYLLDIGGGFPGSE DVKLKFEEITGVINPALDKYFSPDSGVRHIAEPGRYYV

## 靶点信息

研究背景	This gene encodes the rate-limiting enzyme of the polyamine biosynthesis pathway which catalyzes ornithine to putrescine. The activity level for the enzyme varies in response to growth-promoting stimuli and exhibits a high turnover rate in comparison to other mammalian proteins. Originally localized to both chromosomes 2 and 7, the gene encoding this enzyme has been determined to be located on 2p25, with a pseudogene located on 7q31-qter. Multiple alternatively spliced transcript variants encoding distinct isoforms have been identified.
基因ID	4953
基因名	ODC1
Swiss	P11926
别名	ODC;ODC1

## 产品验证



Western blot analysis of ODC1 expressed in Mouse kidney,Rat kidney,293T using ODC1 Rabbit pAb at 1:1000. Secondary antibody: HRP Goat Anti-Rabbit IgG (H+L) at 1:5000. Lysates/proteins: 30ug per lane. Blocking buffer: 5% non-fat dry milk in TBST. Detection: ECL Enhanced Kit. Exposure time: 120s.

## 实验步骤

访问官网浏览详情: [www.ablybio.cn](http://www.ablybio.cn)