

# MAPRE1 Rabbit pAb

货号: **AYP10701**

## 产品信息

反应	Human,Mouse,Rat
宿主	Rabbit
克隆性	Polyclonal
预测反应	<b>WB:</b> Tianfu broilers
应用	<a href="#">WB</a> <a href="#">IF/ICC</a>
推荐浓度	<b>WB:</b> 1:500 - 1:2000 <b>IF/ICC:</b> 1:50 - 1:200
理论分子量	29kDa
实测分子量	34kDa
形式	Liquid
保存条件	Store at -20°C. Avoid freeze / thaw cycles. Buffer: PBS with 0.01% thiomersal,50% glycerol,pH7.3.
偶联物	Unconjugated
阳性对照	B-cell,U-87MG,LO2,HT-29,NIH/3T3,Mouse lung,Mouse spleen,Rat heart
细胞定位	Cytoplasm,centrosome,cytoskeleton,microtubule organizing center
纯化	Affinity purification

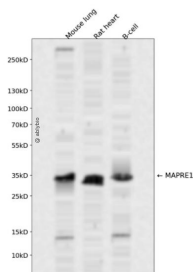
## 抗原信息

抗原信息	Recombinant fusion protein containing a sequence corresponding to amino acids 134-268 of human MAPRE1 (NP_036457.1).
序列	ETAVAPSLVAPALNPKKPLTSSSAAPQRPISQRTAAAPKAGPGVVRKNPVGNGDDEAAELMQQVNVLKLTVEDLEKERDFYFGKLRNIELICQENEGENDPVLQRIVDILYATDEGFVIPDEGGPQEEQEEY

## 靶点信息

研究背景	The protein encoded by this gene was first identified by its binding to the APC protein which is often mutated in familial and sporadic forms of colorectal cancer. This protein localizes to microtubules, especially the growing ends, in interphase cells. During mitosis, the protein is associated with the centrosomes and spindle microtubules. The protein also associates with components of the dynactin complex and the intermediate chain of cytoplasmic dynein. Because of these associations, it is thought that this protein is involved in the regulation of microtubule structures and chromosome stability. This gene is a member of the RP/EB family.
基因ID	22919
基因名	MAPRE1
Swiss	Q15691
别名	MAPRE1;EB1

## 产品验证



Western blot analysis of MAPRE1 expressed in Mouse lung, Rat heart, B-cell using MAPRE1 Rabbit pAb at 1:1000. Secondary antibody: HRP Goat Anti-Rabbit IgG (H+L) at 1:5000. Lysates/proteins: 30ug per lane. Blocking buffer: 5% non-fat dry milk in TBST. Detection: ECL Enhanced Kit. Exposure time: 120s.

## 实验步骤

访问官网浏览详情: [www.ablybio.cn](http://www.ablybio.cn)