

— ABLYBIO, Help Your Research



# CREM Rabbit pAb

货号: **AYP10695**

## 产品信息

反应	Human,Mouse,Rat
宿主	Rabbit
克隆性	Polyclonal
预测反应	<b>ChIP:</b> Homo sapiens,Mus musculus
应用	WB IF/ICC
推荐浓度	<b>WB:</b> 1:100 - 1:500 <b>IF/ICC:</b> 1:50 - 1:200
理论分子量	11-38kDa
实测分子量	39KDa
形式	Liquid
保存条件	Store at -20°C. Avoid freeze / thaw cycles. Buffer: PBS with 0.01% thiomersal,50% glycerol,pH7.3.
偶联物	Unconjugated
阳性对照	HeLa,293T,Mouse testis,RAW264.7
细胞定位	Cytoplasm,Nucleus
纯化	Affinity purification

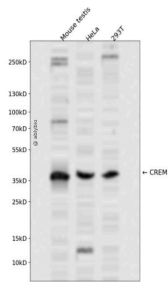
## 抗原信息

抗原信息	A synthetic peptide corresponding to a sequence within amino acids 1-100 of human CREM (NP_853549.1).
------	---

## 靶点信息

研究背景	This gene encodes a bZIP transcription factor that binds to the cAMP responsive element found in many viral and cellular promoters. It is an important component of cAMP-mediated signal transduction during the spermatogenic cycle, as well as other complex processes. Alternative promoter and translation initiation site usage allows this gene to exert spatial and temporal specificity to cAMP responsiveness. Multiple alternatively spliced transcript variants encoding several different isoforms have been found for this gene, with some of them functioning as activators and some as repressors of transcription.
基因ID	1390
基因名	CREM
Swiss	Q03060 ( <a href="https://www.uniprot.org/uniprotkb/Q03060/entry">https://www.uniprot.org/uniprotkb/Q03060/entry</a> )
别名	CREM,CREM-2,ICER,hCREM-2,CREM Rabbit pAb,Inducible cAMP early repressor

## 产品验证



Western blot analysis of CREM expressed in Mouse testis, HeLa, 293T using CREM Rabbit pAb at 1:1000. Secondary antibody: HRP Goat Anti-Rabbit IgG (H+L) at 1:5000. Lysates/proteins: 30ug per lane. Blocking buffer: 5% non-fat dry milk in TBST. Detection: ECL Enhanced Kit. Exposure time: 120s.

## 实验步骤

访问官网浏览详情: [www.ablybio.cn](http://www.ablybio.cn) (<https://www.ablybio.cn/www.ablybio.cn>)